





RIOLIS

CATALOGUE

N°14 (2022)



CONTENTS

4	NEW RELEASES
14	DIAMOND MOSAIC
28	RIOLIS PREMIUM
42	PRE-PRINTED
42	Satin-stitch
44	Pre-Printed background kits
51	embroidery therapy
53	long-stitch kits
54	FAMOUS ARTISTS
60	CROSS-STITCH
160	HANDICRAFT
180	FOR BEGINNERS
188	BEADS
189	WOOL/ACRYLIC THREADS
	Last season!
	Aida-Star
WA	wool/acrylic threads
MA	Anchor stranded cotton threads
B	beads
T	tape
F	felt
M	stranded cotton threads
MT	metallic thread

RIOLIS

Tel.: +370 382 52988 (Export office, Lithuania, Europe)
e-mail: salesteam@riolis.com

www.riolis.com

Any part of the present catalogue can't be transferred or copied
in any form without written permission of RIOLIS.



We live in uncertain times and the last couple of years brought us lots of surprises, fears and changes. We had to learn to adapt fast and we are hopeful that we can conquer all the fears and get used to the new aspects to our lives.

While pandemic mixed up our usual life, there is a bright side to it as well. Many people had a chance to slow down, concentrate on what is most important and start taking a better care of themselves. This included having more time to work on their favorite hobbies or even try something new. We had a pleasure to welcome a lot of people who just started stitching or diamond painting, also those who picked up a needle or stylus for the first time in many years. In addition to that, our loyal fans also had extra time to create even more masterpieces from our kits!

In this catalogue we are glad to introduce our latest releases for every taste: travelers will be fascinated with gorgeous views of 2021 Festival in Cappadocia, art lovers will be able to choose from three world famous masterpieces 0094 PT The Tree of Life after G. Klimt's Painting, 2034 Water Lilies after C. Monet's Painting and 2032 Sunflowers after V. Van Gogh's Painting and we have many more exciting designs in different styles, sizes and difficulty levels as always.

We are sure everyone will find something they love in this RIOLIS catalog. So, let's dive into the colorful and relaxing world of RIOLIS!

*Best wishes,
your RIOLIS team*



RIOLIS releases renewed designs of the embroidery kits' covers. Now you will find in shops light packaging with light-blue patterns. The emphasis is on the subject of the picture. For your comfort, it is easy to find kits' title (5), materials (2) and used techniques (3). As earlier, item number (1) and size (4) are mentioned on the cover.

1 Examples of color marking on the kits:

1698 WOOL/ACRYLIC

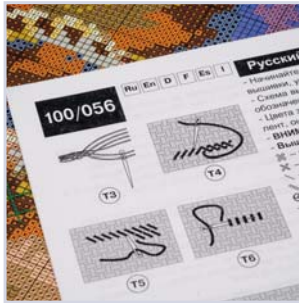
1319 BEADS

1722 STRANDED COTTON

1708AC OTHER MATERIALS

WHAT IS INSIDE A RIOLIS KIT?

Every RIOLIS kit contains the world's finest needle art designs, threads of the best quality, Zweigart fabrics, a colored chart, numbered sorters, detailed instructions in 6 languages, and a needle. You can see what is inside the kit without opening the package. Ready-to-stitch kits and best quality materials – all of this is RIOLIS!



wool/acrylic or
stranded cotton

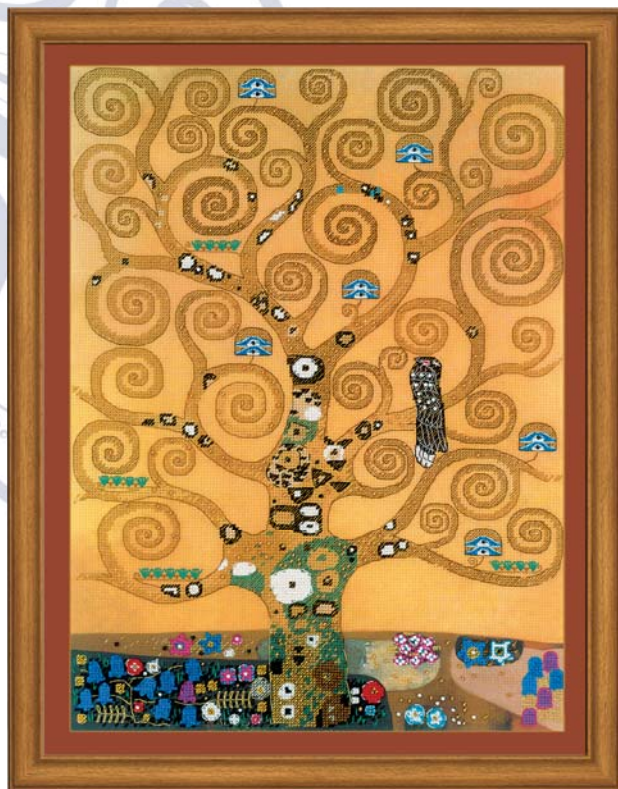
full -colored chart



ribbon

embroidery
needle

instruction for
embroidery



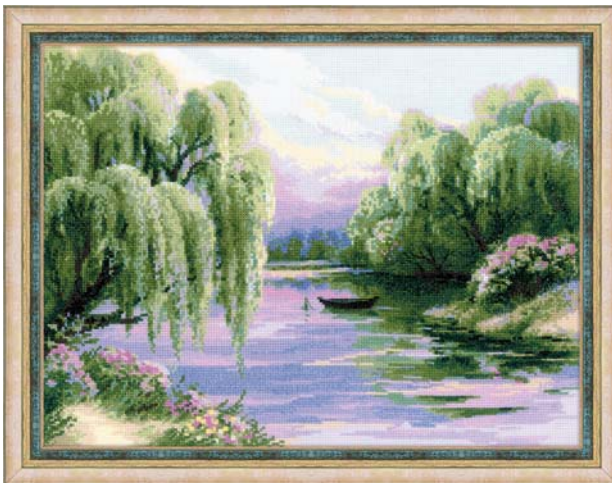
0094 PT The Tree of Life after G. Klimt's Painting
30x40 cm, 11 $\frac{3}{4}$ "x15 $\frac{3}{4}$ ", 14 ct Aida with pre-printed background, MA, MT, B



2034 Water Lilies after C. Monet's Painting
40x30 cm, 15 $\frac{3}{4}$ "x11 $\frac{3}{4}$ ", 14 ct white Aida, WA



2032 Sunflowers after V. Van Gogh's Painting
30x40 cm, 11 $\frac{3}{4}$ "x15 $\frac{3}{4}$ ", 14 ct white Aida, WA



2012 Quiet Morning
40x30 cm, 15 $\frac{3}{4}$ "x11 $\frac{3}{4}$ ", 14 ct white Aida, MA



2030 Lilac Blossoms
40x40 cm, 15¼"x15¼", 10 ct white Aida, WA



2026 Hydrangea Garden
30x40 cm, 11¾"x15¾",
14 ct white Aida, MA



2000 Lilies
40x50 cm, 15¾"x19¾",
10 ct white Aida, WA



2018 Southern Magnolia
30x24 cm, 11¼"x9½",
14 ct white Aida, MA



2031 Sunny Autumn
40x60 cm, 15¼"x23½",
10 ct white Aida, WA



2024 Lace Peonies
30x24 cm, 11¼"x9½",
14 ct black Aida, MA



2003 Tulips Hat Box
20x20 cm, 7¾"x7¾",
14 ct white Aida, WA



2006 Hello Autumn
25x25 cm, 9¾"x9¾",
14 ct white Aida, MA



2001 Black Cat
24x30 cm, 9½"x11¼",
10 ct white Aida, WA



1996 Flight of the Bumblebee
21x30 cm, 8¼"x11¼",
14 ct white Aida, WA



2002 Ready for Autumn
25x25 cm, 9¾"x9¾",
14 ct white Aida, MA



2033 Fluffy Sweet Tooth
21x30 cm, 8¼"x11¼",
14 ct white Aida, WA



2017 Tough Guys
30x40 cm, 11¼"x15¼",
14 ct colored Aida, MA



2004 By The Fireplace
21x30 cm, 8¼"x11¼",
14 ct white Aida, WA



2023 The Era of Dinosaurs
40x40 cm, 15¼"x15¼", 14 ct white Aida, MA

NEW RELEASES



2015 Magic Lessons
24x30 cm, 9½"x11¾",
18 ct white Aida, MA



2013 Jetset Living
20x20 cm, 7¾"x7¾",
18 ct white Aida, MA



2008 At the Beach
20x20 cm, 7¾"x7¾",
18 ct white Aida, MA



2014 Straight to the Stars
24x30 cm, 9½"x11¾",
18 ct white Aida, MA



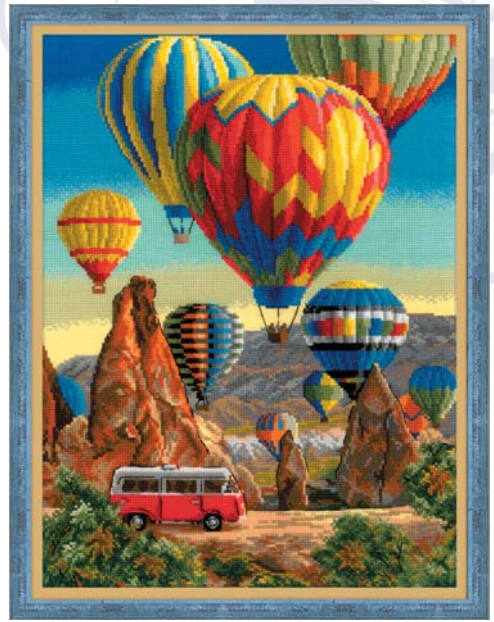
2029 Snowfall in the Forest
20x20 cm, 7¾"x7¾",
14 ct white Aida, WA



1998 Rainbow Beauty
25x25 cm, 9¾"x9¾",
14 ct white Aida, MA



2035 Housewarming
19x40 cm, 8¼"x15¾", 14 ct white
Aida, MA, wooden hangers



2021 Festival in Cappadocia
30x40 cm, 11¾"x15¾",
14 ct white Aida, WA



0095 PT Treasure Hunting
30x40 cm, 11¾"x15¾",
14 ct Aida with pre-printed background, MA



2020 Summer Tea
24x30 cm, 9½"x11¾",
14 ct flaxen Aida, WA



2019 Dreamer
25x25 cm, 9¾"x9¾",
14 ct white Aida, MA, B



2025 Peter and Fevronia
30x40 cm, 11¾"x15¾",
14 ct white Aida, WA, MT, B



2010 Ciao, bella!
15x15 cm, 6"x6",
10 ct white Aida, WA



2011 Ma cherie!
15x15 cm, 6"x6",
10 ct white Aida, WA



2028 Needlework Paradise
20x20 cm, 7¾"x7¾",
18 ct white Aida, MA



2027 Squirrel
20x20 cm, 7¾"x7¾",
10 ct flaxen Aida, WA



0091 PT Friendship Tea
20x20 cm, 7¾"x7¾", 14 ct Aida with
pre-printed background, MA



0092 PT Sweethearts' Coffee
20x20 cm, 7¾"x7¾", 14 ct Aida with
pre-printed background, MA



0097 PT Rose Hip in the Garden
15x15 cm, 6"x6", fabric with
pre-printed picture, WA



0096 PT Rudbeckia in the Garden
15x15 cm, 6"x6", fabric with
pre-printed picture, WA



2007 Easter Still Life with Chickens
30x24 cm, 11¾"x9½",
14 ct flaxen Aida, WA



2005 Sweet Dessert
20x20 cm, 7¾"x7¾",
14 ct white Aida, MA

RIOLIS

DIAMOND MOSAIC

Best of RIOLIS collection



AM0069 Pansies
21x30 cm, 8¼"x11¾",
18 colors



AM0071 Hibiscus
40x40 cm, 15¾"x15¾", 23 colors



AM0073 Winter Tea Time
30x40 cm, 11¾"x15¾",
25 colors



AM0047 Other Worlds
40x40 cm, 15¾"x15¾", 33 colors

This new art form is growing in popularity around the world and is an exciting pastime for adults and young people alike. Applying the diamonds is a simple and relaxing process so choose your favorite design and have fun completing your new masterpiece. Enjoy your creative journey!



AM0072
Dahlias

40x40 cm, 15¾"x15¾", 21 colors



AM0070 Early Tulips
21x30 cm, 8¼"x11¾",
15 colors



AM0039
Pair of Horses

40x40 cm, 15¾"x15¾" 30 colors



AM0046 Motmot
20x38 cm, 7¾"x15",
19 colors



AM0044 Starry Night Over the Rhone
after Van Gogh's Painting
38x27 cm, 15"x10¾", 23 colors



AM0065 Velvet Look
30x40 cm, 11¾"x15¾",
17 colors



AM0067 Autumn View
40x30 cm, 15¾"x11¾",
28 colors



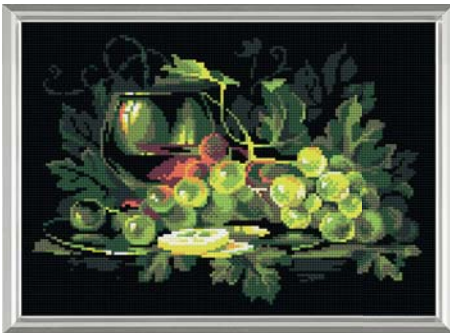
AM0068 Spring View
40x30 cm, 15¾"x11¾",
20 colors



AM0023 Under My Umbrella
27x27 cm, 10 $\frac{3}{4}$ "x10 $\frac{3}{4}$ ",
21 colors



AM0038 Bright Butterflies
30x30 cm, 11 $\frac{3}{4}$ "x11 $\frac{3}{4}$ ",
22 colors



AM0026 Still Life with Lemon
38x27 cm, 15"x10 $\frac{3}{4}$ ",
14 colors



AM0012 Coffee
38x27 cm, 15"x10 $\frac{3}{4}$ ",
21 colors



AM0060 Crocuses
20x20 cm, 7 $\frac{3}{4}$ "x7 $\frac{3}{4}$ ",
18 colors



AM0061 Roses
20x20 cm, 7 $\frac{3}{4}$ "x7 $\frac{3}{4}$ ",
16 colors



AM0040 Snow Leopard
30x30 cm, 11¼"x11¼", 12 colors



AM0050 The Great Bear
27x38 cm, 10¾"x15", 21 colors



AM0045 Bagira
30x30 cm, 11¼"x11¼", 12 colors



AM0025 The Italian Courtyard
27x38 cm, 10¾"x15", 20 colors



AM0036 White Swans
30x30 cm, 11¼"x11¼", 25 colors



AM0041
Magic Owl

27x38 cm, 10¾"x15", 20 colors



AM0043
Wise Raven

27x38 cm, 10¾"x15", 20 colors



AM0042
Ice-Cold Wind

27x38 cm, 10¾"x15", 16 colors



AM0076
Snowfall in the Forest

30x30 cm, 11¾"x11¾", 21 colors



AM0054

Watercolor Gerberas

30x30 cm, 11¼"x11¼", 27 colors



AM0053

Watercolor Phlox

30x30 cm, 11¼"x11¼", 27 colors



AM0059

Lovebirds

30x30 cm, 11¼"x11¼", 29 colors



AM0058

White Doves

30x30 cm, 11¼"x11¼", 26 colors



AM0006
Sunflowers
27x38 cm, 10¼"x15", 18 colors



AM0007
Poppies
27x38 cm, 10¼"x15", 17 colors



AM0009
Peonies in a Vase
38x38 cm, 15"x15", 39 colors



AM0024
Wonderful Rose
20x38 cm, 7¾"x15", 17 colors



AM0014 Russian Blue
20x25 cm, 7¾"x9¾", 11 colors



AM0005 Basset Hound Puppy
27x38 cm, 10¾"x15", 22 colors



AM0010 City & Cats. Winter
20x20 cm, 7¾"x7¾", 11 colors



AM0011 City & Cats. Spring
20x20 cm, 7¾"x7¾", 14 colors



AM0048 City & Cats. Summer
20x20 cm, 7¾"x7¾", 13 colors



AM0049 City & Cats. Autumn
20x20 cm, 7¾"x7¾", 13 colors



AM0055 Carps
30x30 cm, 11¼"x11¼", 18 colors



AM0056 Meow-Zen
30x30 cm, 11¼"x11¼", 20 colors



AM0057 Egypt
30x30 cm, 11¼"x11¼", 18 colors



AM0051 Little Unicorn
10x10 cm, 4"x4", 11 colors



AM0052 Calf in the Meadow
10x10 cm, 4"x4", 12 colors



AM0013 Serbian Landscape
40x40 cm, 15¾"x15¾",
28 colors



AM0016
Pansy Medley
27x38 cm, 10¾"x15", 27 colors



AM0008
Basket of Strawberries
27x27 cm, 10¾"x10¾", 18 colors



AM0015
Ripe Apples
27x27 cm, 10¾"x10¾", 23 colors



AM0062 Little Deer
20x20 cm, 7¼"x7¼",
15 colors



AM0066 Hedgehog
20x20 cm, 7¼"x7¼",
21 colors



AM0063 Little Owls
20x20 cm, 7¼"x7¼",
12 colors



AM0033 Pomegranates
20x20 cm, 7¼"x7¼",
18 colors



AM0077 Squirrel
20x20 cm, 7¼"x7¼",
21 colors



AM0034 Oranges
20x20 cm, 7¼"x7¼",
16 colors



AM0074
Sunshine
10x10 cm, 4"x4", 8 colors



AM0064
Snow Tiger
10x10 cm, 4"x4", 10 colors



AM0018
Santa Claus
10x10 cm, 4"x4", 17 colors



AM0019
Poinsettia
10x10 cm, 4"x4", 9 colors



AM0004
Christmas Eve
10x10 cm, 4"x4", 12 colors



AM0017
Owl
10x10 cm, 4"x4", 14 colors
26



AM0027
Jam Day
10x10 cm, 4"x4", 12 colors



AM0021
Parakeet
10x10 cm, 4"x4", 14 colors



AM0031

Pink Rose

10x10 cm, 4"x4", 8 colors



AM0032

Yellow Narcissus

10x10 cm, 4"x4", 10 colors



AM0037

Pair of Pansies

10x10 cm, 4"x4", 11 colors



AM0020

Turtle

10x10 cm, 4"x4", 14 colors



AM0030

Purple Bindweed

10x10 cm, 4"x4", 8 colors



AM0022

Butterfly

10x10 cm, 4"x4", 13 colors



AM0029

Stick with Me

10x10 cm, 4"x4", 10 colors



AM0028

Tea for Two

10x10 cm, 4"x4", 12 colors



AM0035

Best Friend

10x10 cm, 4"x4", 10 colors



100/063 Girl with a Pearl Earring after J. Vermeer's Painting
30x40 cm, 11¾"x15¾", 14 ct black Aida, MA, cols. 38




100/061 Laurel after A. Mucha's Artwork
30x30 cm, 11¾"x11¾", 18 ct colored Aida, MA, cols. 30



100/062 The Birth of Venus after S. Botticelli's Painting
40x60 cm, 15¼"x23½", 14 ct colored Aida, MA, cols. 26



 **100/039 Pink Peonies**
40x30 cm, 15¼"x11¼", 14 ct white Aida, MA, cols. 20



100/059 Old Hollywood
25x40 cm, 9¾"x15¾",
14 ct white Aida, MA, cols. 21



100/058 Girl with Easel after A. Mucha's
Artwork 28x40 cm, 11"x15¾",
18 ct colored Aida, MA, cols. 29



100/023 Chocolate after J. E. Liotard's Painting 24x40 cm, 9½"x15¾",
14 ct white Aida, MA, cols. 29



100/050 Bride
30x40 cm, 11¾"x15¾",
14 ct white Aida, MA, MT, T, B, cols. 22



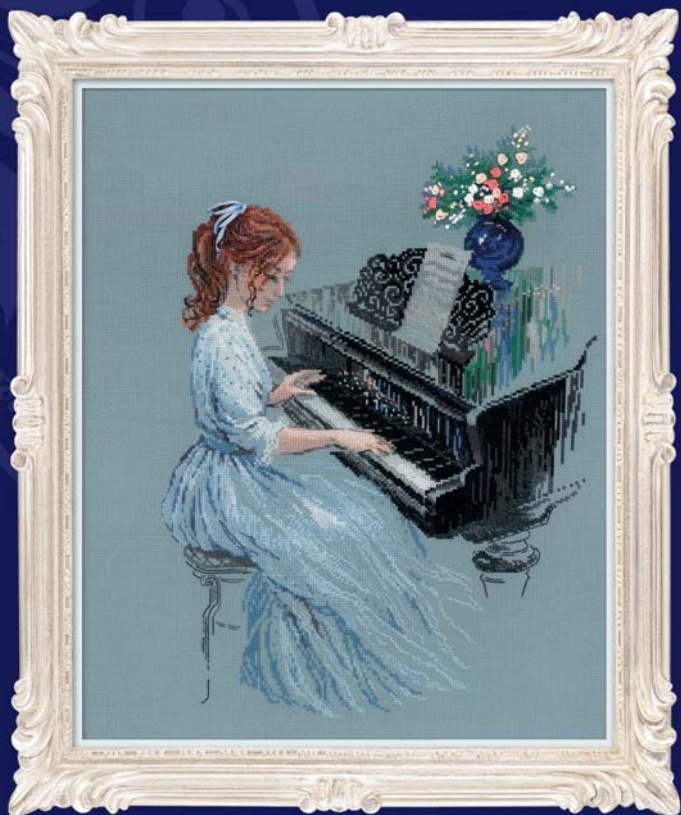
**100/051 Camille Monet after
C. Monet's Painting**
24x30 cm, 9½"x11¾",
14 ct white Aida, MA, cols. 31



**100/055 Windflowers after
J. W. Waterhouse's Painting**
30x45 cm, 11¾"x17¾",
14 ct white Aida, MA, cols. 33



100/034 Cherry Blossom
40x30 cm, 15¾"x11¾",
14 ct white Aida, MA, B, T, MT, cols. 19



100/056 Adagio

40x50 cm, 15 $\frac{3}{4}$ "x19 $\frac{3}{4}$ ", 14 ct colored Aida, MA, T, cols. 20



100/037 Scarlet Poppies

70x30 cm, 27 $\frac{1}{2}$ "x11 $\frac{3}{4}$ ", 14 ct colored Aida, MA, B, MT, cols. 9



100/054 Ballet Dancer
40x50 cm, 15¼"x19¾", 14 ct colored Aida, MA, B, cols. 22



100/052 Spring Tulips
70x30 cm, 27½"x11¾", 14 ct colored Aida, MA, cols. 18



100/057 Sunny Day
50x40 cm, 19¾"x15¾", 14 ct colored Aida, MA, cols. 37



100/060 Still Life with Watermelon
50x40 cm, 19¾"x15¾", 14 ct colored Aida, MA, cols. 35



100/049 Tea Roses

30x40 cm, 11 $\frac{3}{4}$ "x15 $\frac{3}{4}$ ", 14 ct colored Aida, MA, cols. 26



100/042 Flemish Summer 40x50 cm,

15 $\frac{3}{4}$ "x19 $\frac{3}{4}$ ", 14 ct colored Aida, MA, cols. 30



100/036 Summer Delight
35x45 cm, 13¾"x17¾",
14 ct white Aida, MA, B, cols. 29



100/033 Tenderness
30x40 cm, 11¾"x15¾",
14 ct white Aida, MA, cols. 15



100/053 Tender Gaze
40x50 cm, 15¾"x19¾", 14 ct colored Aida, MA, cols. 25



100/027 Velvet Evening
30x40 cm, 11¾"x15¾",
14 ct colored Aida, MA, B, T, cols. 16



100/028 Lilac Evening
30x40 cm, 11¾"x15¾",
14 ct colored Aida, MA, B, T, cols. 16



100/045 Forget Me Not
30x40 cm, 11¾"x15¾",
14 ct colored Aida, MA, B, T, cols. 19



100/047 Pastoral
40x50 cm, 15¾"x19¾", 14 ct colored Aida, MA, cols. 31



100/029 Persian Garden
30x50 cm, 11¾"x19¾", 14 ct white Aida, MA, B, cols. 27



★ **100/041 Christmas Eve** 45x35 cm, 17¾"x13¾",
14 ct white Aida-Star, MA, MT, B, cols. 22



★ **100/046 Magical Sleigh Ride**
55x30 cm, 21¾"x11¾", 14 ct white Aida-Star, MA, MT, B, cols. 14

Aida Star, a new canvas by Zweigart, is used in RIOLIS designs. Holographic thread woven into fabric has a glimmering gloss and gives the work a festive look. It is a perfect choice for winter pictures from RIOLIS Premium collection!



100/021 Wolves 40x60 cm, 15¾"x23½",
14 ct white Aida, MA, cols. 14



100/043 A Secret Romance
40x60 cm, 15¾"x23½", 14 ct white Aida, MA, T, cols. 30



100/038 In the Sunset
60x40 cm, 23½"x15¾", 14 ct white Aida, MA, B, cols. 27



 **100/010 Full Moon** 48x48 cm, 19"x19",
14 ct black Aida, MA, MT, cols. 7



0075 PT Plate with Pink Poppies. Satin Stitch 21x21 cm, 8¼"x8¼", gabardine fabric, MA



0076 PT Plate with Chrysanthemums. Satin Stitch 21x21 cm, 8¼"x8¼", gabardine fabric, MA



0082 PT Baby Boy Booties. Satin Stitch 21x21 cm, 8¼"x8¼", gabardine fabric, MA, B



0081 PT Baby Girl Booties. Satin Stitch 21x21 cm, 8¼"x8¼", gabardine fabric, MA, B



0084 PT Birch Bolete. Satin Stitch 13x16 cm, 5"x6¼", gabardine fabric, MA



0085 PT Chanterelle. Satin Stitch 13x16 cm, 5"x6¼", gabardine fabric, MA



0059 PT Pansies.
Satin Stitch 20x20 cm,
7¾"x7¾", gabardine fabric, MA



0058 PT Globe Flowers.
Satin Stitch 20x20 cm,
7¾"x7¾", gabardine fabric, MA



0065 PT Crocuses. Satin Stitch
13x16 cm, 5"x6¼",
gabardine fabric, MA, B



0066 PT Primroses. Satin Stitch
13x16 cm, 5"x6¼",
gabardine fabric, MA



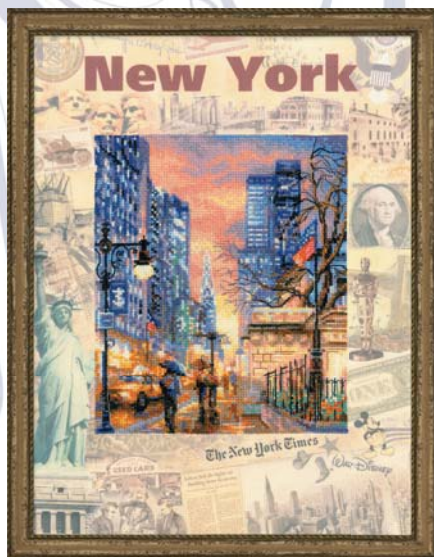
0086 PT
Juicy Watermelon
20x20 cm, 7¾"x7¾",
gabardine fabric, MA, B



0089 PT
Chamomiles
20x20 cm, 7¾"x7¾",
gabardine fabric, MA



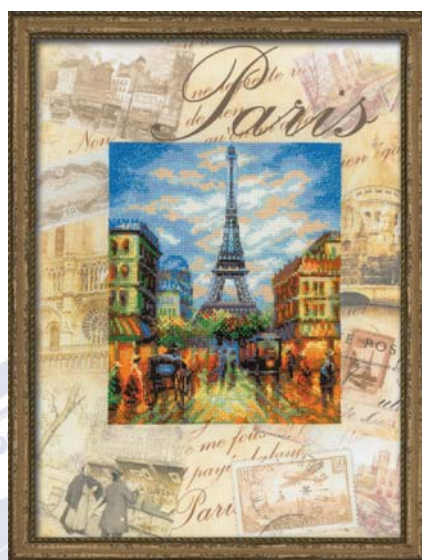
0087 PT
Ripe Pumpkin
20x20 cm, 7¾"x7¾",
gabardine fabric, MA, B



0025 PT Cities of the World. New York
30x40 cm, 11¾"x15¾",
14 ct Aida, MA



0019 PT Cities of the World. London
30x40 cm, 11¾"x15¾",
14 ct Aida, MA



0018 PT Cities of the World. Paris
30x40 cm, 11¾"x15¾",
14 ct Aida, MA



0033 PT Around the World
30x40 cm, 11¾"x15¾",
14 ct Aida, MA



0038 PT Eagle Owl
30x40cm, 11¼"x15¼",
14 ct Aida, MA



0028 PT Cranes
30x40 cm, 11¼"x15¼",
14 ct Aida, MA



0012 PT Flamingo
30x40 cm, 11¼"x15¼",
14 ct Aida, MA



0077 PT Toucan
30x40 cm, 11¼"x15¼",
14 ct Aida, MA



0052 PT Foal and Puppy
30x30 cm, 11¼"x11¼",
10 ct Aida, WA



0083 PT Frogs
20x20 cm, 7¼"x7¼",
14 ct Aida, MA



0053 PT Goatling and Kittens
30x30 cm, 11¼"x11¼",
10 ct Aida, WA




0051 PT Lamb and Rabbit
30x30 cm, 11¼"x11¼",
10 ct Aida, WA



0057 PT Forest Dragon
30x40 cm, 11¼"x15¾",
14 ct Aida, MA



 **0034 PT Bird of Happiness**
30x40 cm, 11¼"x15¾",
14 ct Aida, MA, MT



0045 PT Windmill
21x30 cm, 8¼"x11¾",
14 ct Aida, MA



0044 PT Lighthouse
21x30 cm, 8¼"x11¾",
14 ct Aida, MA



0050 PT Oriental Bouquet 50x30 cm, 19¾"x11¾", 14 ct Aida, MA



0054 PT Autumn Colors 40x30 cm, 15¾"x11¾", 10 ct Aida, WA



0068 PT Garden Watering Can
21x30 cm, 8¼"x11¾",
14 ct Aida, MA



0069 PT Second Life
21x30 cm, 8¼"x11¾",
14 ct Aida, MA



0035 PT Love Letters. Rose
21x30 cm, 8¼"x11¾",
14 ct Aida, MA



0080 PT Succession
after W. Kandinsky's composition
40x30 cm, 15¾"x11¾", 18 ct Aida, MA



0088 PT Stork Family
30x40 cm, 11¾"x15¾",
14 ct Aida, MA



0079 PT Cozy Corner
19x40 cm, 7½"x15¾",
14 ct Aida, MA



0046 PT Cleopatra
30x40 cm, 11¾"x15¾",
14 ct Aida, MA



0043 PT White Stag
30x40 cm, 11¼"x15¼",
14 ct Aida, MA, MT



0024 PT Unicorn
30x40 cm, 11¼"x15¼",
14 ct Aida, MA, MT, B



0090 PT Velvet Look
30x40 cm, 11¼"x15¼",
14 ct Aida, MA



0078 PT Griffin
40x30 cm, 15¼"x11¼",
14 ct Aida, MA

RIOLIS offers a new version of anti-stress work. Embroidery therapy gives you not only the freedom of creativity, but also the opportunity to choose a degree of freedom itself. For needlewomen new series charts seem a little bit unusual, as traditionally they help to make the work in accordance with the picture.



1588 Lovely Flower 30x34 cm, 11¼"x13½",
fabric with pre-printed picture, WA



1586 Magic Feather
21x30 cm, 8¼"x11¼", fabric
with pre-printed picture, WA



1587 Bird of Luck
21x30 cm, 8¼"x11¼", fabric
with pre-printed picture, WA

**1688 Sketch with
Cornflowers**
15x18 cm, 6"x7",
fabric with
pre-printed picture,
WA



**1687
Flower Sketch**
15x18 cm, 6"x7",
fabric with
pre-printed picture,
WA

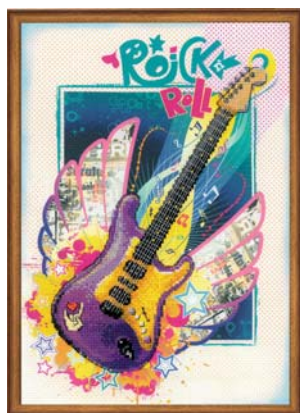




0031 PT Wikov
38x26 cm, 15"x10¼", 14 ct Aida, MA, MT



0041 PT Jazz
21x30 cm, 8¼"x11¾", 14 ct Aida, MA, MT



0042 PT Rock'n'Roll
21x30 cm, 8¼"x11¾", 14 ct Aida, MA, MT



0070 PT Rose
20x20 cm, 7¾"x7¾", 14 ct Aida, MA



0071 PT Peony
20x20 cm, 7¾"x7¾", 14 ct Aida, MA

All long stitch kits use 13 ct stramin canvas with pre-printed picture and woolen/acrylic threads, if other is not stated.



1630 Town in the Mountains
24x12 cm, 9½"x4¾"



🔔 1738 Quiet Midday
24x12 cm, 9½"x4¾"



1650 Cottage Garden 6x6 cm,
2¼"x2¼"



1653 Christmas Eve 6x6 cm,
2¼"x2¼"



🔔 1716 Husky in Snowdrifts
10x10 cm, 4"x4"



1652 Summer Meadow 6x6 cm,
2¼"x2¼"



1651 Forest Lake 6x6 cm,
2¼"x2¼"



1632 Poppy
10x10 cm,
4"x4"



1633 Three Pansies 10x10 cm,
4"x4"



1714 Fox in Daisies 10x10 cm,
4"x4"



🔔 1570 Lavender
12x12 cm, 4¾"x4¾",
10 ct Aida



🔔 1571 Sunflowers
12x12 cm, 4¾"x4¾",
10 ct Aida



1572 Pink Garden
12x12 cm, 4¾"x4¾",
10 ct Aida



1715 Owl Among the Stars 10x10 cm,
4"x4"



916 Motherly Love
after G. Klimt's Painting
30x35 cm, 11¾"x13¾",
14 ct white Aida, WA, B



1170 The Kiss
after G. Klimt's Painting
30x35 cm, 11¾"x13¾",
14 ct white Aida, WA, B, bugle



1226 Lady with a Fan after G. Klimt's
Painting 35x35 cm, 13¾"x13¾",
14 ct white Aida, WA, MT, B



1591 Still Life with Meadow Flowers
and Roses after Van Gogh's Painting
30x30 cm, 11¾"x11¾",
14 ct black Aida, MA



1884 Starry Night Over the Rhone after Van Gogh's Painting
38x27 cm, 15"x10¾", 10 ct white Aida, WA



1088 Starry Night after Van Gogh's Painting
40x30 cm, 15¾"x11¾",
14 ct white Aida, WA



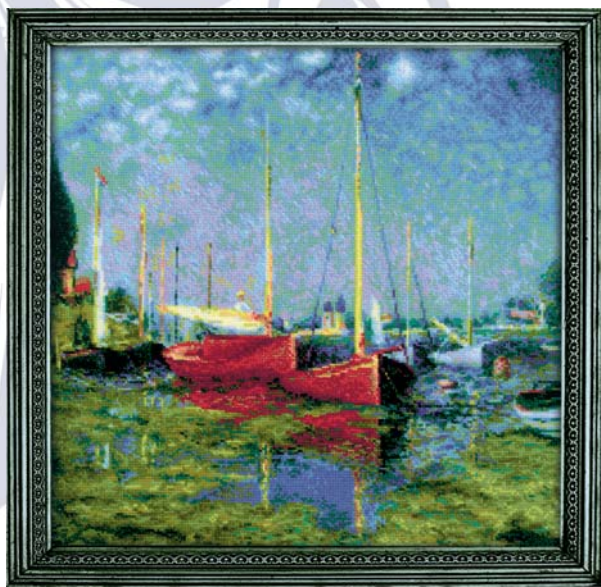
1850 In the Meadow after C. Monet's Painting
40x30 cm, 15¾"x11¾",
14 ct white Aida, WA



1701 Monastery Shonenvert after Engravings of the XIX century
40x30 cm, 15¾"x11¾",
14 ct white Aida, MA



1702 Windmill at Knokke after C. Pissarro's Painting
33x25 cm, 13"x9¾",
10 ct white Aida, WA



1779 Argenteuil
after C. Monet's Painting
40x40 cm, 15¾"x15¾", 14 ct white Aida, WA



1552 Venice.
Bridge of Sighs
26x38 cm, 10¼"x15",
14 ct white Aida, MA



1774 First Evening in Their Own Home
after H. Fisher's Painting
30x42 cm, 11¾"x16½",
14 ct white Aida, MA



1402 Bouquet of Roses after
Pierre-August Renoir's Painting
40x48 cm, 15¾"x19", 14 ct white Aida, WA, MA



1698 Almond Blossom after V. van Gogh's Painting
40x30 cm, 15¾"x11¾", 14 ct white Aida, WA



1643 Tulip Fields after C. Monet's Painting 33x25 cm, 13"x9¾",
10 ct white Aida, WA



1699 Bastille after K. Korovin's Painting
40x30 cm, 15¾"x11¾",
14 ct white Aida, WA



1772 Cornflowers after I. Levitan's Painting 30x40 cm,
11¾"x15¾", 14 ct white Aida, WA



1528 Moose In A Winter Forest after V. L. Muravyov's Painting 40x28 cm,
15¾"x11", 14 ct white Aida, MA, WA



1771 Still Life after N. Japaridze's Painting
40x30 cm, 15¾"x11¾",
14 ct white Aida, WA, MA



1955 Saint-Honore Street after C. Pissarro's Painting
40x50 cm, 15¾"x19¾", 14 ct white Aida, WA



🔔 1189 Amsterdam.
The Old Church and Church of St. Nicholas after Klinkenberg's
Painting 54x40 cm, 21¼"x15¾", 14 ct white Aida, WA, MA



1981 Winter Palace 65x22 cm, 25½"x8¾", 14 ct white Aida, WA



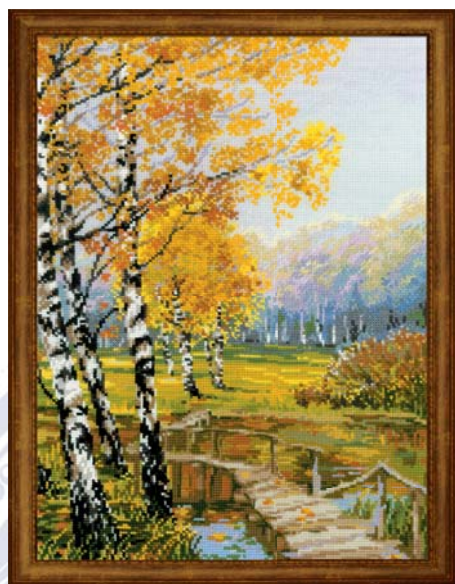
1768 Kizhi Pogost 60x35 cm, 23½"x13¾", 14 ct white Aida, WA



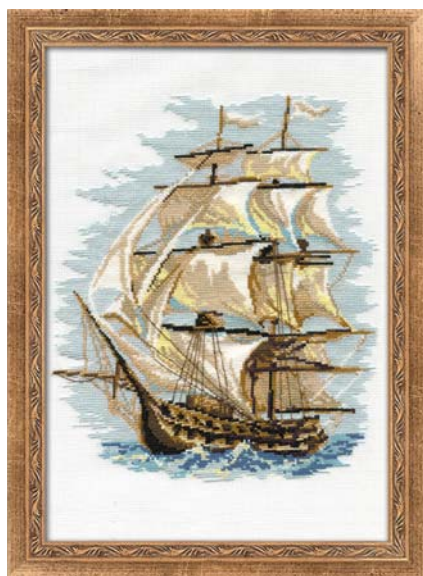
1812 Sergiev Posad 60x30 cm, 23½"x11¾", 14 ct white Aida, WA



1579 The Palace Garden
30x40 cm, 11¼"x15¼",
14 ct white Aida, WA



1134 The Birches
26x38 cm, 10¼"x15",
14 ct white Aida, WA



479 Ship
30x40 cm, 11¼"x15¼",
15 ct white Aida, WA



1645 Swallow's Nest
35x60 cm, 13¾"x23½",
14 ct white Aida, WA



1520 Neuschwanstein Castle
35x60 cm, 13¾"x23½",
14 ct white Aida, WA



1706 Lake Baikal 60x40 cm, 23½"x15¼", 10 ct white Aida, WA



1705 Early Spring
30x30 cm, 11¼"x11¼",
18 ct colored Aida, MA



1678 Snowy Winter
30x30 cm, 11¼"x11¼",
18 ct colored Aida, MA



1960 Upstream
30x40 cm, 11¼"x15¼",
10 ct white Aida, WA



1978 Autumn Foliage
30x40 cm, 11¼"x15¼",
10 ct white Aida, WA




1677 Rainy Summer
30x30 cm, 11¼"x11¼",
18 ct colored Aida, MA



1676 Warm Autumn
30x30 cm, 11¼"x11¼",
18 ct colored Aida, MA



 **373 The Italian Courtyard**
26x38 cm, 10¼"x15",
10 ct white Aida, WA



1306 Flower Street
26x38 cm, 10¼"x15",
14 ct white Aida, WA



1845 Country House
40x30 cm, 15 $\frac{3}{4}$ "x11 $\frac{3}{4}$ ",
14 ct white Aida, WA



978 Flowering Garden
38x26 cm, 15"x10 $\frac{1}{4}$ ",
15 ct white Aida, WA



1079 Autumn View
38x26 cm, 15"x10 $\frac{1}{4}$ ",
14 ct white Aida, WA



1098 Spring View
38x26 cm, 15"x10 $\frac{1}{4}$ ",
14 ct white Aida, WA



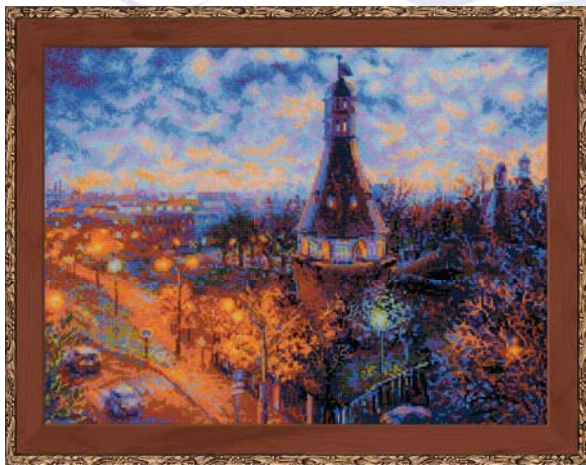
1078 Summer View
38x26 cm, 15"x10 $\frac{1}{4}$ ",
14 ct white Aida, WA



1080 Winter View
38x26 cm, 15"x10 $\frac{1}{4}$ ",
14 ct white Aida, WA



1992 New York at Night
15x31 cm, 6"x12¼",
14 ct black Aida, MA,
wooden hanger



1990 Moscow at Night. Simonov Monastery
40x30 cm, 15¾"x11¾",
14 ct white Aida, WA



1993 London at Night
15x31 cm, 6"x12¼",
14 ct black Aida, MA,
wooden hanger



1952 Paris Roofs
15x31 cm, 6"x12¼",
14 ct white Aida, MA,
wooden hanger



1953 Pisa Roofs
15x31 cm, 6"x12¼",
14 ct white Aida, MA,
wooden hanger



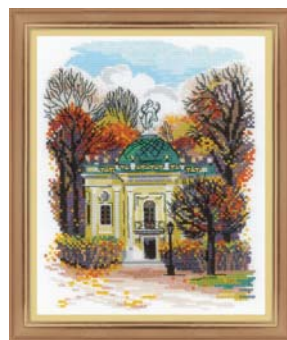
1692 Plate with Great Tit
30x30 cm, 11¼"x11¼",
14 ct white Aida, MA



1693 Plate with Oriole
30x30 cm, 11¼"x11¼",
14 ct white Aida, MA



1759
Kuskovo
Dutch House
18x22 cm,
7"x8¾", 14 ct
white Aida,
WA, M



1760
Kuskovo
Hermitage
18x22 cm,
7"x8¾", 14 ct
white Aida,
WA, M



1734 Kuskovo Manor
65x22 cm, 25½"x8¾", 14 ct white Aida, WA, M



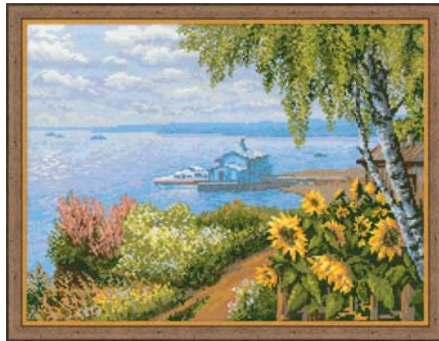
1670 Serbian Village

40x40 cm, 15¾"x15¾", 10 ct white Aida, WA



1569 Serbian Landscape

40x40 cm, 15¾"x15¾", 10 ct white Aida, WA



1506 Pier

40x30 cm, 15¾"x11¼", 14 ct white Aida, WA



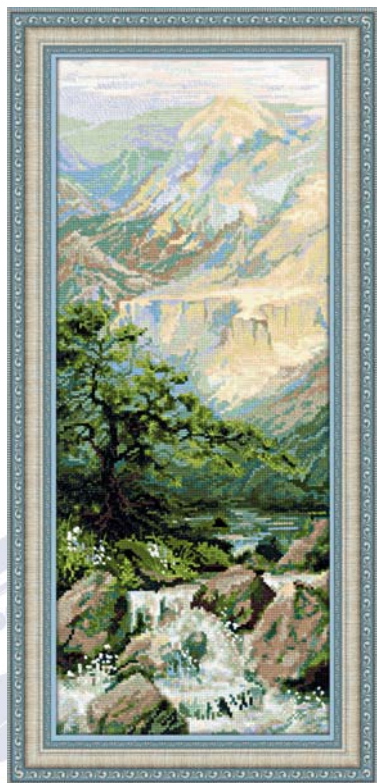
1605 Estuary 30x24 cm,
11¼"x9½", 10 ct white Aida, WA



1604 Path to the Lake 30x24 cm,
11¼"x9½", 10 ct white Aida, WA



1471 Free Flight
50x40 cm, 19 $\frac{3}{4}$ "x15 $\frac{3}{4}$ ", 14 ct white Aida, WA



1543 Mountain River 20x50 cm,
7 $\frac{3}{4}$ "x19 $\frac{3}{4}$ ", 14 ct white Aida, MA, WA



1487 Mountain River 20x50 cm,
7 $\frac{3}{4}$ "x19 $\frac{3}{4}$ ", 14 ct white Aida, MA, WA



1881 Compass
30x30 cm, 11¼"x11¼",
14 ct white Aida, WA



1003 Morning in the Country
21x30 cm, 8¼"x11¼",
14 ct white Aida, MA



1194 Landscape with Waterfall
40x60 cm, 15¼"x23½", 10 ct white Aida, WA



1472 At the Fountain
40x30 cm, 15¾"x11¾",
14 ct white Aida, MA, T



1644 Santorini
40x30 cm, 15¾"x11¾",
14 ct white Aida, MA



1690 Blooming Provence 55x25 cm, 21¼"x9¾", 14 ct white Aida, MA, WA, B



1689 Provence Street 18x24 cm,
7"x9½", 14 ct white Aida, MA, WA, B



1691 Farm in Provence 18x24 cm,
7"x9½", 14 ct white Aida, MA, WA, B



1747 Liguria
40x30 cm, 15¼"x11¼",
14 ct white Aida, WA



1863 Southern Courtyard
30x30 cm, 11¼"x11¼",
10 ct white Aida, WA



1155 The Golden Grove 60x40 cm, 23½"x15¼", 10 ct white Aida, WA



989 Russian Winter
38x26 cm, 15"x10¼",
15 ct white Aida, WA



1427 Winter Evening
41x23 cm, 16¼"x9",
14 ct white Aida, MA



1900 Distant Shores 60x35 cm, 23½"x13¾", 14 ct white Aida, MA



1908 Noise of Waterfall 60x40 cm, 23½"x15¾", 10 ct white Aida, WA



1260 Moscow. St. Basil's Cathedral
40x40 cm, 15¾"x15¾", 14 ct white Aida,
WA, MT



1548 St. Petersburg. Church of the Savior on Blood 40x40 cm, 15¾"x15¾", 14 ct white Aida, WA, MT



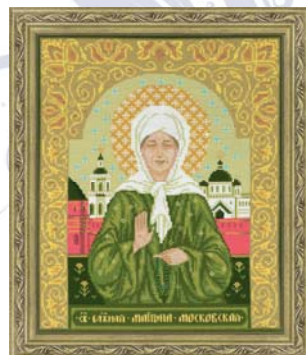
1529
Inexhaustible Chalice
29x35 cm, 11½"x13¾",
14 ct white Aida,
WA, MA, MT, B



1454
St. Anna of Novgorod
29x35 cm, 11½"x13¾",
14 ct white Aida,
WA, MA, MT, B



1674
Guardian Angel
21x30 cm, 8¼"x11¾",
14 ct white Aida,
WA, MA, MT, B



1385
St. Blessed Matrona of Moscow
29x35 cm, 11½"x13¾",
14 ct white Aida,
WA, MA, MT, B



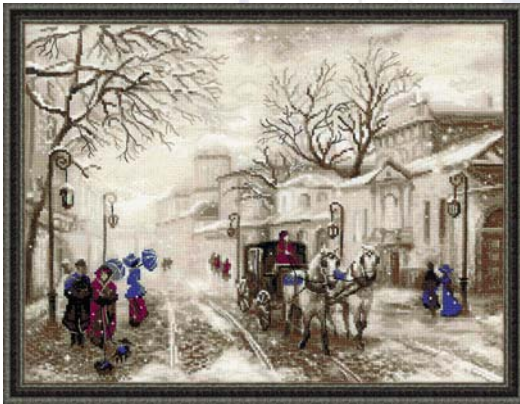
1277 Old Photo. The Letter
26x38 cm, 10¼"x15",
14 ct white Aida, WA



1434 Old Photo. Riviera
26x38 cm, 10¼"x15",
14 ct white Aida, WA



1611 Old Photo. Waiting
26x38 cm, 10¼"x15",
14 ct white Aida, WA



1400 Old Street 40x30 cm, 15¾"x11¾", 14 ct flaxen Aida, WA



1177 The Beetle 38x26 cm, 15"x10¼", 14 ct white Aida, WA



1638 Bolshoi Theatre 50x30 cm, 19¾"x11¾", 14 ct black Aida, WA



1929
Keys to Home
 13x30 cm, 5"x11¼",
 14 ct white Aida, M



1723
Rococo. Stroll
 25x33 cm, 9¾"x13",
 18 ct colored Aida, MA



1930
Keys to Happiness
 13x30 cm, 5"x11¼",
 14 ct white Aida, M



1405
From all Heart
 11x11 cm, 4¼"x4¼",
 25 ct colored
 Lugana, B, MA



1956
Love is in the Air
 23x23 cm, 9"x9",
 14 ct white Aida,
 MA



1932
Happily Ever After
 20x20 cm, 7¾"x7¾",
 14 ct white Aida,
 MA



**1935 Hello, Little One!
(for a boy)**
15x15 cm, 6"x6",
18 ct white Aida, MA



1926 Wedding Rings
15x15 cm, 6"x6",
18 ct colored Aida, MA



**1934 Hello, Little One!
(for a girl)**
15x15 cm, 6"x6",
18 ct white Aida, MA



1563 Sunny Day Fairy
15x20 cm, 6"x7¾",
14 ct white Aida, MA, B



1562 Spring Breeze Fairy
15x20 cm, 6"x7¾",
14 ct white Aida, MA, B



1735 Thumbelina
21x30 cm, 8¼"x11¾",
18 ct colored Aida, MA, B



1736 Little Red Riding Hood
21x30 cm, 8¼" x 11¾",
18 ct colored Aida, MA



1470 Let's go Fishing
30x30 cm, 11¼"x11¼",
14 ct white Aida, WA, T



1333 Sweet Tooth
30x30 cm, 11¼"x11¼",
14 ct white Aida, WA, T



1720 Under My Umbrella
25x25 cm, 9¾"x9¾",
14 ct white Aida, MA, WA



1781 Girl with Ducklings
30x30 cm, 11¼"x11¼",
14 ct white Aida, WA, T



1694 Autumn Holidays
30x30 cm, 11¼"x11¼",
14 ct white Aida, WA



1646 Housewives
30x30 cm, 11¼"x11¼",
14 ct white Aida, WA, T



1173 First Date
30x30 cm, 11 $\frac{3}{4}$ "x11 $\frac{3}{4}$ ",
14 ct flaxen Aida, WA, T



1486 Sweet Dreams
35x35 cm, 13 $\frac{3}{4}$ "x13 $\frac{3}{4}$ ",
14 ct white Aida, MA, B, T, lace



1833 Kathy's Kittens
25x25 cm, 9 $\frac{3}{4}$ "x9 $\frac{3}{4}$ ",
14 ct white Aida, MA, WA



1800 The Day Trip
23x23 cm, 9"x9",
18 ct colored Aida, MA



1799 There's No Bad Weather
23x23 cm, 9"x9",
18 ct colored Aida, MA



1847 Cottage Garden.
Summer
 20x30 cm, 7¾"x11¾",
 14 ct flaxen Aida,
 WA, MT, MA, wooden hanger



1751 Cottage Garden.
Winter
 20x30 cm, 7¾"x11¾",
 14 ct flaxen Aida,
 WA, M, wooden hanger



1656 Cottage Garden.
Spring
 20x30 cm, 7¾"x11¾",
 14 ct flaxen Aida,
 WA, M, wooden hanger



1658 Welcome!
 21x30 cm, 8¼"x11¾",
 14 ct flaxen Aida, WA



1657 Cottage Garden.
Autumn
 20x30 cm, 7¾"x11¾",
 14 ct flaxen Aida,
 WA, M, wooden hanger



1862

Favorite Tales

20x50 cm, 7¾"x 19¾",

14 ct white Aida,

M, wooden hanger



1880

The Sea is Better

20x40 cm, 7¾"x15¾",

14 ct colored Aida,

MA, wooden hanger



1770 King of the Heap

19x90 cm, 7½"x35½",

14 ct white Aida, M,

wooden hangers



995 Card Newborn
8x11cm, 3¼"x4¼", 15 ct white Aida, M



1637 My Family
30x21 cm, 11¼"x8¼",
14 ct white Aida, M



1853 Love
18x10 cm 7"x4",
14 ct white Aida, M



1360 Day of an Angel
30x30 cm, 11¼"x11¼",
14 ct white Aida, WA



1617 Photo frame Knight's Castle
30x30 cm, 11¼"x11¼",
14 ct colored Aida, WA, M, F



**1123 Girls Birth
Announcement** 18x24 cm,
7"x9½", 14 ct white Aida, MA



**1124 Boys Birth
Announcement** 18x24 cm,
7"x9½", 14 ct white Aida, MA



1417 It's a Girl!
20x20 cm, 7¼"x7¾", 28 ct white
Brittney Lugana, MA, lace



1418 It's a Boy!
20x20 cm, 7¼"x7¾", 28 ct white
Brittney Lugana, MA, lace



1713 Twins Birth Announcement
20x20 cm, 7¼"x7¾", 18 ct colored Aida, MA



1941 Colorful Flight
30x30 cm, 11¼"x11¼",
14 ct white Aida, MA



1944 Thorny Tribe
20x20 cm, 7¾"x7¾",
14 ct white Aida, MA



1977 Winter Tea Time
18x24 cm, 7"x9½",
14 ct black Aida, MA



1940 Noble Deer
33x25 cm, 13"x9¾",
14 ct white Aida, MA



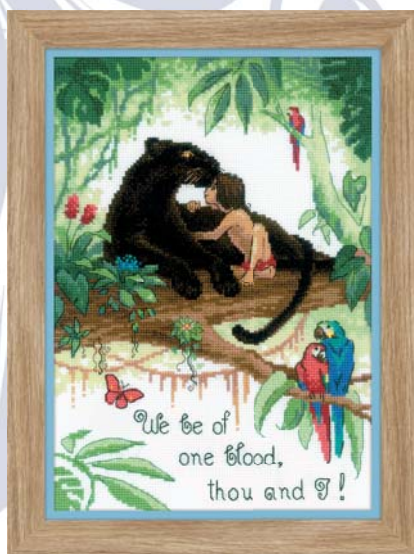
1923 Dog Show 40x20 cm, 15¾"x7¾", 14 ct white Aida, M



1951 Favorite Hobby
18x24 cm, 7"x9½",
18 ct colored Aida, MA



1917 My House
35x35 cm, 13¾"x13¾",
18 ct colored Aida, MA



1987 We be of one blood
21x30 cm, 8¼"x11¾",
14 ct white Aida, MA



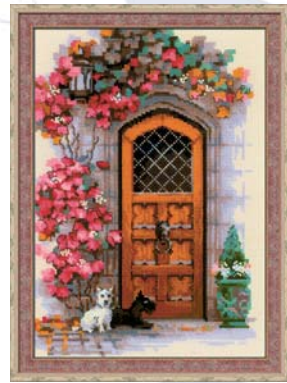
1861 Dreamers
21x30 cm, 8¼"x11¾",
14 ct white Aida, MA



1458 Carousel
35x35 cm, 13¾"x13¾",
14 ct colored Aida, WA, MA



1831 Italian Door
21x30 cm,
8¼"x11¼",
14 ct colored Aida,
WA



1832 Scottish Door
21x30 cm,
8¼"x11¼",
14 ct colored Aida,
WA



1730 Cuckoo Clock 25x40 cm,
9¾"x15¾", 14 ct white Aida, WA



1731 Window with Sparrows 30x40 cm,
11¼"x15¾", 10 ct flaxen Aida, WA



1732 Window with Apples 30x40 cm,
11¼"x15¾", 10 ct flaxen Aida, WA



1733 Window with Magpie 30x40 cm,
11¼"x15¾", 10 ct flaxen Aida, WA



1872 Magic Owl
21x30 cm, 8¼"x11¾",
14 ct colored Aida, WA



1876 Wise Raven
21x30 cm, 8¼"x11¾",
14 ct colored Aida, WA



1875 Ice-Cold Wind
21x30 cm, 8¼"x11¾",
14 ct colored Aida, WA



1788 The Underwater Kingdom
40x30 cm, 15¾"x11¾", 14 ct white Aida,
WA, MA



1894
Good Souls. Twinkle
20x20 cm, 7¼"x7¼",
14 ct white Aida, WA



1895
Good Souls. Beauty
20x20 cm, 7¼"x7¼",
14 ct white Aida, WA



1896
Good Souls. Moon
20x20 cm, 7¼"x7¼",
14 ct white Aida, WA



1942 Travelling Sorcerer
30x21 cm, 11¼"x8¼",
14 ct white Aida, WA



1904 Green Hills
40x30 cm, 15¼"x11¼",
14 ct white Aida, WA



1909 Mysterious Castle
40x30 cm, 15¼"x11¼",
14 ct white Aida, WA



1966 Little Mermaid Rosalina
21x30 cm, 8¼"x11¾",
14 ct white Aida, MA



1963 Energy Mandala
20x20 cm, 7¾"x7¾",
18 ct white Aida, MA



1964 Self-knowledge Mandala
20x20 cm, 7¾"x7¾",
18 ct white Aida, MA



1965 Little Mermaid Aquamarine
21x30 cm, 8¼"x11¾",
14 ct white Aida, MA



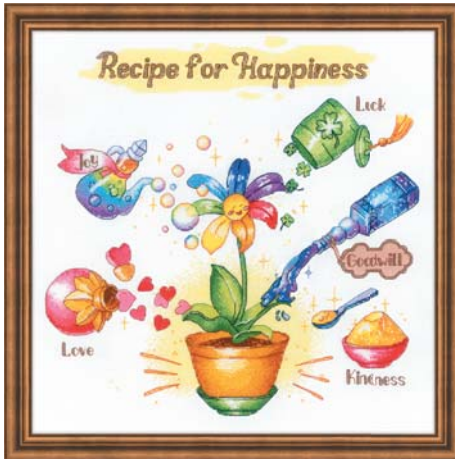
1737 Bathroom Interior, 2 pcs. 15x15 cm, 6"x6", 18 ct colored Aida, MA



1939 Fairy Unicorn
24x30 cm, 9½"x11¾",
14 ct white Aida, MA



1943 Goldfishes
24x30 cm, 9½"x11¾",
14 ct white Aida, MA



1920 Recipe for Happiness
30x30 cm, 11¾"x11¾",
18 ct white Aida, MA



1919 Recipe. Pancakes
30x30 cm, 11¾"x11¾",
18 ct white Aida, MA



1718 Holiday on Grass

24x18 cm, 9½"x7", 14 ct white Aida, WA



1719 Holiday by the Sea

24x18 cm, 9½"x7", 14 ct white Aida, WA



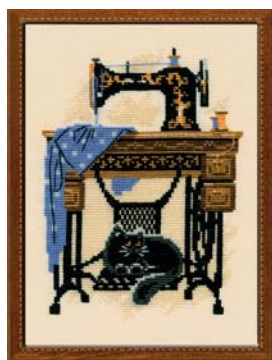
859 Cat with Gramophone

18x24 cm, 7"x9½",
15 ct colored Aida, WA

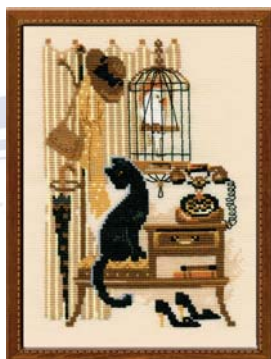


1495 Dachshund Blues

20x20 cm, 7¾"x7¾",
14 ct white Aida, MA



**857 Cat with Sewing
Machine** 18x24 cm, 7"x9½",
15 ct colored Aida, WA



860 Cat with Telephone

18x24 cm, 7"x9½",
15 ct colored Aida, WA



858 Cat with Clock

18x24 cm, 7"x9½",
15 ct colored Aida, WA



611 Spring
13x13 cm, 5"x5",
15 ct white Aida, WA



612 Summer
13x13 cm, 5"x5",
15 ct white Aida, WA



613 Autumn
13x13 cm, 5"x5",
15 ct white Aida, WA



1664 Alarm Clock
9x9 cm, 3½"x3½",
14 ct colored Aida, WA



610 Winter
13x13 cm, 5"x5",
15 ct white Aida, WA



1668 Lantern
9x9 cm, 3½"x3½",
14 ct colored Aida, WA



1667 Snow
9x9 cm, 3½"x3½",
14 ct colored Aida, WA



1666 Love
9x9 cm, 3½"x3½",
14 ct colored Aida, WA



1665 Skates
9x9 cm, 3½"x3½",
14 ct colored Aida, WA



1979 Forest Calendar
 30x40 cm, 11 $\frac{3}{4}$ "x15 $\frac{3}{4}$ ",
 14 ct flaxen Aida, WA, M



1393 Pair of Wolves
 40x40 cm, 15 $\frac{3}{4}$ "x15 $\frac{3}{4}$ ",
 10 ct white Aida, WA



1671 Abyssinian Cats
 40x40 cm, 15 $\frac{3}{4}$ "x15 $\frac{3}{4}$ ", 10 ct flaxen Aida,
 WA, MA, B, soutage tape, bell



1724 Kittens in a Basket
30x24 cm, 11¾"x9½",
14 ct white Aida, WA



1725 Kitten on the Book
30x24 cm, 11¾"x9½",
14 ct white Aida, WA



1811 Cat with Kittens
30x24 cm, 11¾"x9½",
14 ct white Aida, WA



1066 Thai Cat
38x26 cm, 15"x10¼",
10 ct flaxen Aida, WA



1391 Child's Play
25x25 cm, 9¾"x9¾",
14 ct white Aida, WA



1390 Tender Age
25x25 cm, 9¾"x9¾",
14 ct white Aida, WA



1327 Feline Family
40x30 cm, 15¾"x11¾", 14 ct flaxen Aida, WA



1328 Canine Family
40x30 cm, 15¾"x11¾", 14 ct flaxen Aida, WA



1120 Shih Tzu
25x25 cm, 9¾"x9¾",
14 ct white Aida, WA, T



906 Dachshund
25x25 cm, 9¾"x9¾",
15 ct white Aida, WA



1248 Pets

40x30 cm, 15¾"x11¾", 14 ct flaxen Aida, WA



1247 Furry Friends

40x30 cm, 15¾"x11¾", 14 ct flaxen Aida, WA



1176 Pug Dog

25x25 cm, 9¾"x9¾",
14 ct white Aida, WA



1710 Sheltie

25x25 cm, 9¾"x9¾",
14 ct colored Aida, WA



1547 Hunter
20x20 cm, 7¾"x7¾",
14 ct colored Aida, WA



1546 Dreamer
20x20 cm, 7¾"x7¾",
14 ct colored Aida, WA



1649 Rocky
20x20 cm, 7¾"x7¾",
14 ct colored Aida, WA



1068 German Shepherd
24x30 cm, 9½"x11¾",
10 ct flaxen Aida, WA



1578 Basset Hound Puppy
26x38 cm, 10¼"x15",
10 ct flaxen Aida, WA



1067 Chihuahua
25x25 cm, 9¾"x9¾",
14 ct white Aida, WA, B



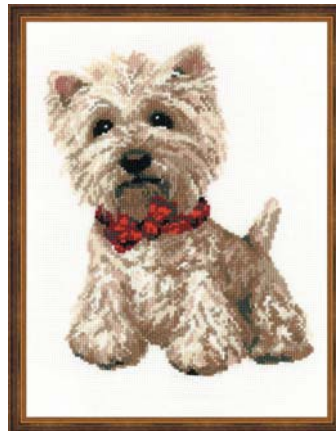
1635 Poodle
25x25 cm, 9¾"x9¾",
14 ct colored Aida, WA, T



1585 Pomeranian
25x25 cm, 9¾"x9¾",
14 ct colored Aida, WA



1151 Hunting. Spaniel
18x27 cm, 7"x10¼",
14 ct white Aida, WA



945 West Highland White
20x26 cm, 7¾"x10¼",
15 ct white Aida, WA



764 Russian Blue
21x30 cm, 8¼"x11¾",
10 ct black Aida, WA



1928 Gentleman
25x33 cm, 9¾"x13",
14 ct white Aida, MA



766 Grey Cat
21x30 cm, 8¼"x11¾",
10 ct black Aida, WA



1599 Maine Coon
21x30 cm, 8¼"x11¾",
10 ct black Aida, WA



1912 Snowy Meow
24x30 cm, 9½"x11¾",
10 ct white Aida, WA



1878 Meow-Zen
24x30 cm, 9½"x11¾",
10 ct white Aida, WA



1525 Pet Cat
24x30 cm, 9½"x11¾",
10 ct flaxen Aida, WA



1848 Castle Guardian
21x30 cm, 8¼"x11¾",
14 ct black Aida, WA



1639 Russian Hunting
60x40 cm, 23½"x15¾", 14 ct white Aida, MA



1238 Amazon
30x40 cm, 11¾"x15¾",
14 ct black Aida, MA



1921 The Great Bear
30x40 cm, 11¾"x15¾",
14 ct white Aida, WA



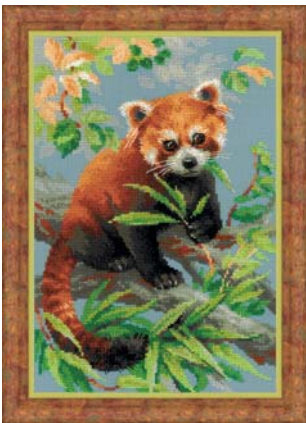
1864
Pair of Horses
40x40 cm, 15¼"x15¼",
14 ct white Aida, WA



1767
Border Collie
30x40 cm, 11¼"x15¼",
14 ct white Aida, WA



1761 Meerkats
25x25 cm,
9¾"x9¾",
14 ct white Aida,
WA



1627 Red Panda
21x30 cm, 8¼"x11¼",
14 ct colored Aida, WA



1510 Fox
21x30 cm, 8¼"x11¼",
14 ct colored Aida, WA



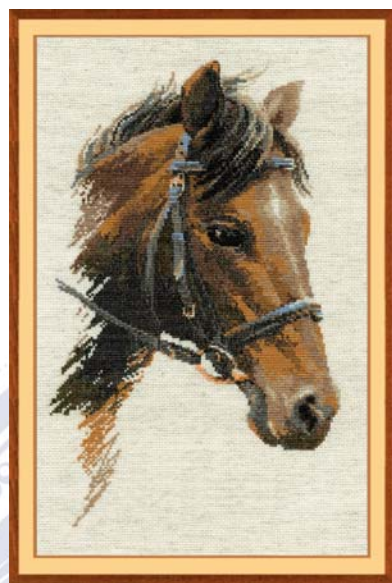
1697 Giraffes
22x38 cm, 8¾"x15",
10 ct flaxen Aida, WA



1451 Andalusian Character
30x45 cm, 11¼"x17¾",
14 ct black Aida, MA



1494 Breeze Through Mane
30x45 cm, 11¼"x17¾",
14 ct black Aida, MA



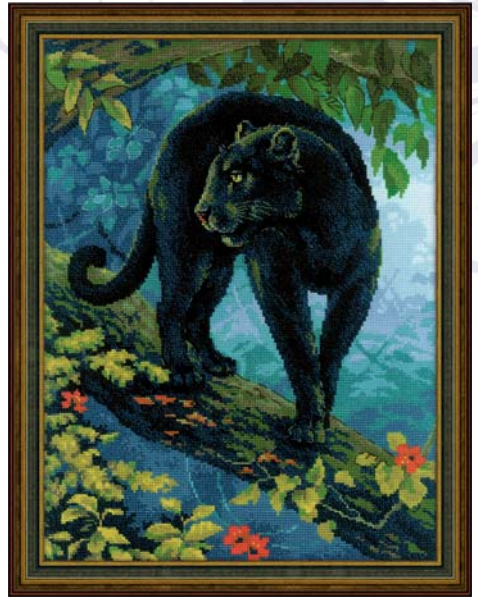
826 Bulat
24x40 cm, 9½"x15¾",
15 ct flaxen Aida, WA



827 Moon
24x40 cm, 9½"x15¾",
15 ct flaxen Aida, WA



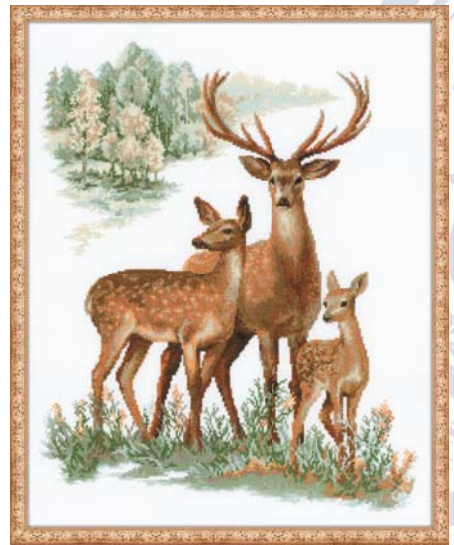
1626 Husky
26x38 cm, 10¼"x15",
10 ct colored Aida, WA



1826 Bagira
30x40 cm, 11¾"x15¾",
14 ct white Aida, MA



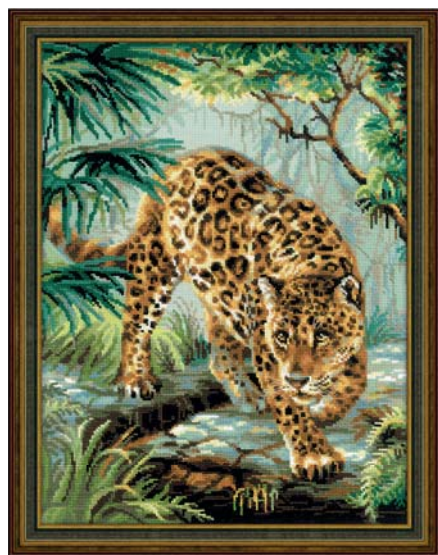
1077 Deer
30x40 cm, 11¾"x15¾",
10 ct white Aida, WA



1370 Deers 40x50 cm,
15¾"x19¾",
14 ct white Aida, MA



1673 Forest Hostess
30x40 cm, 11¼"x15¼",
14 ct white Aida, MA



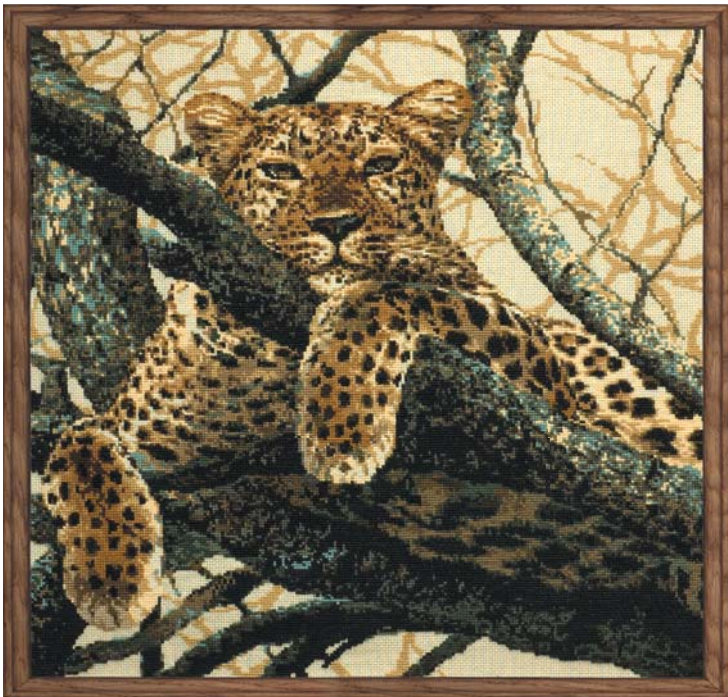
1549 Owner of the Jungle
30x40 cm, 11¼"x15¼",
14 ct colored Aida, MA



1361 Cougar 60x60 cm, 23½"x23½", 10 ct flaxen Aida, WA



1261 King of Beasts
60x40 cm, 23½"x15¾", 10 ct colored Aida, WA



937 Leopard 60x60 cm, 23½"x23½", 10 ct flaxen Aida, WA



1804 White Mane and Roses
30x40 cm, 11¼"x15¼",
14 ct white Aida, WA



1886 Snow Leopard
30x30 cm, 11¼"x11¼",
14 ct white Aida, WA



1399 Labrador
30x40 cm, 11¼"x15¼",
14 ct white Aida, WA



1437 On the Holiday
30x40 cm, 11¼"x15¼",
14 ct flaxen Aida, WA



1258 Horse with Foal 40x30 cm,
15¾"x11¾", 14 ct white Aida, WA



1142 Lions in the Savannah 40x30 cm,
15¾"x11¾", 14 ct black Aida, WA



1438 Bear with Cub
22x38 cm, 8¾"x15", 10 ct white Aida, WA



1159 Panda with Young
22x38 cm, 8¾"x15", 10 ct flaxen Aida, WA



1144 Elephants in the Savannah
40x30 cm, 15¾"x11¾",
14 ct flaxen Aida, WA



1143 Zebras in the Savannah
40x30 cm, 15¾"x11¾",
14 ct flaxen Aida, WA



1479 Rooster 30x40 cm,
11 $\frac{3}{4}$ "x15 $\frac{3}{4}$ ", 14 ct colored Aida, MA



1807 Geese 30x40 cm,
11 $\frac{3}{4}$ "x15 $\frac{3}{4}$ ", 14 ct colored Aida, MA



1501 Afternoon in the Country
50x35 cm, 19 $\frac{3}{4}$ "x13 $\frac{3}{4}$ ", 14 ct white Aida, WA



1636 Desert Foxes
25x25 cm, 9¾"x9¾",
14 ct white Aida, WA



1323 Funny Penguins
40x25 cm, 15¾"x9¾",
14 ct white Aida, WA



1491 Squirrels
25x25 cm, 9¾"x9¾",
14 ct white Aida, WA



1322 Funny Ducklings
40x25 cm, 15¾"x9¾",
14 ct white Aida, WA



1469 Hedgehogs in Lingonberries
25x25 cm, 9¾"x9¾",
14 ct white Aida, WA



1416 Funny Rabbits
40x25 cm, 15¾"x9¾",
14 ct white Aida, WA



1711 Hedgehogs 24x8 cm, 9½"x3¼", 14 ct flaxen Aida, M



1975 Penguins 24x8 cm, 9½"x3¼", 14 ct flaxen Aida, M



1936 The Owl Family 24x8 cm, 9½"x3¼", 14 ct flaxen Aida, M



1865 Over the Waves 24x8 cm, 9½"x3¼", 14 ct flaxen Aida, M



1753 Little Hedgehog
13x13 cm, 5"x5", 14 ct flaxen Aida, WA



1755 Little Owls
13x13 cm, 5"x5", 14 ct flaxen Aida, WA



1754 Little Raccoon
13x13 cm, 5"x5", 14 ct flaxen Aida, WA



1756 Little Boar
13x13 cm, 5"x5", 14 ct flaxen Aida, WA



1879
Foxes in the Leaves
8x24 cm, 3¼"x9½",
14 ct white Aida, WA



1892
Night Magic
10x30 cm, 4"x11¼",
14 ct black Aida, WA



1856 White Doves
25x25 cm, 9¾"x9¾",
14 ct white Aida, WA



1891 Naughty Goat
30x40 cm, 11¾"x15¾",
14 ct colored Aida, MA



1480 Hen
30x30 cm, 11¾"x11¾",
14 ct colored Aida, MA



1890 Alpaca
15x31 cm, 6"x12¼",
14 ct flaxen Aida, WA,
wooden hanger



767 Peacocks
48x48 cm, 19"x19",
14 ct white Aida, MA



1851 Woodpecker
21x30 cm, 8¼"x11¾",
14 ct white Aida, WA



1905 Tropical Birds,
19x90 cm, 9½"x35½",
14 ct colored Aida, WA, M,
wooden hangers



1241 White Owl
45x35 cm, 17 $\frac{3}{4}$ "x13 $\frac{3}{4}$ ", 14 ct flaxen Aida, WA



928 Herons 26x48 cm,
10 $\frac{1}{4}$ "x19", 14 ct white Aida, MA




1305 Winter Day
40x24 cm, 15 $\frac{3}{4}$ "x9 $\frac{1}{2}$ ", 14 ct white Aida, WA



1362 White Cockatoo
30x40 cm, 11 $\frac{3}{4}$ "x15 $\frac{3}{4}$ ",
14 ct colored Aida, MA



 **1388 Frosty Morning**
40x24 cm, 15 $\frac{3}{4}$ "x9 $\frac{1}{2}$ ", 14 ct white Aida, WA



929 Pheasants 26x48 cm,
10¼"x19", 14 ct white Aida, MA



1954 In The Night Forest
40x30 cm, 15¼"x11¾",
14 ct white Aida, MA



1726 White Swans
25x25 cm, 9¾"x9¾",
14 ct white Aida, MA



1780 Lovebirds
20x20 cm, 7¾"x7¾",
14 ct white Aida, WA



1364 Swans. Prague
45x30 cm, 17¾"x11¾",
14 ct colored Aida, MA



1792 Book Club
21x30 cm, 8¼"x11¾",
18 ct colored Aida, MA



1791 Afternoon Tea Club
21x30 cm, 8¼"x11¾",
18 ct colored Aida, MA



1933 The Confession Club
21x30 cm, 8¼"x11¾",
18 ct colored Aida, MA



1766 Guitarist
30x40 cm, 11¼"x15¾",
14 ct colored Aida, WA, MA



1914 Dancer with a Fan
30x40 cm, 11¼"x15¾",
14 ct colored Aida, MA, WA



1740 Dancer
30x40 cm, 11¼"x15¾",
14 ct colored Aida, WA, MA



1817 Angelique
30x40 cm, 11¼"x15¼",
14 ct white Aida, MA



1764 Romance
25x25 cm, 9¾"x9¾",
14 ct white Aida, MA, T, B



1789 Stitching Lessons
30x40 cm, 11¼"x15¼",
14 ct white Aida, MA



1924 Ballad of Love
25x40 cm, 9¾"x15¼",
14 ct colored Aida, MA



1887 Mysterious Rose
21x30 cm, 8¼"x11¼",
14 ct white Aida, MA



1945 The Joy of Summer
20x20 cm, 7¾"x7¾",
14 ct white Aida, MA



1946 The Lightness of Spring
20x20 cm, 7¾"x7¾",
14 ct white Aida, MA



1915 White Lilies
20x20 cm, 7¾"x7¾",
14 ct white Aida, MA



1916 Red Rose Hip
20x20 cm, 7¾"x7¾",
14 ct white Aida, MA



1056 Sunflowers 25x50 cm,
9¾"x19¾", 10 ct black Aida, WA



1057 Poppies 25x50 cm,
9¾"x19¾", 10 ct black Aida, WA



941 White Orchid
40x40 cm, 15¾"x15¾", 15 ct black Aida, WA



841 Irises
20x92 cm, 7¾"x36¼",
15 ct black Aida, WA



939 Parrot Flower
20x92 cm, 7¾"x36¼",
15 ct colored Aida, WA



842 Daffodils
20x92 cm, 7¾"x36¼",
15 ct black Aida, WA



**1947 Bouquet with
Eustoma and Gypsophila**
25x25 cm, 9¾"x9¾",
14 ct flaxen Aida, WA



**1913 Bouquet
with Lagurus and Cotton**
25x25 cm, 9¾"x9¾",
14 ct flaxen Aida, WA



1922 Rhododendron
40x40 cm, 15¾"x15¾",
10 ct white Aida, WA



1717 Herbs
30x24 cm, 11¼"x9½",
14 ct flaxen Aida, WA



1794 Spicy Condiments
30x24 cm, 11¼"x9½",
14 ct flaxen Aida, WA



1722 Basket with Roses
35x30 cm, 13¾"x11¾", 14 ct white Aida, MA



1974 Purple Allium
21x30 cm, 8¼" x 11¾", 14 ct Aida white, WA



1712 Sweet Figs
40x30 cm, 15¾"x11¾",
14 ct white Aida, MA



1618 Pink Pomegranate
40x30 cm, 15¾"x11¾",
14 ct colored Aida, MA




1972 Mon amour
20x20 cm, 7 $\frac{3}{4}$ "x7 $\frac{3}{4}$ ",
14 ct white Aida, WA



898 Pink Roses on Lattice
35x55 cm, 13 $\frac{3}{4}$ "x21 $\frac{3}{4}$ ",
15 ct colored Aida, MA



 **864 Still Life with Peach**
30x24 cm, 11 $\frac{3}{4}$ "x9 $\frac{3}{4}$ ",
15 ct colored Aida, WA



1827 Juicy Peach
40x30 cm, 15 $\frac{3}{4}$ "x11 $\frac{3}{4}$ ",
14 ct colored Aida, MA



1446 Bouquet of Gladioli
26x48 cm, 10 $\frac{1}{4}$ "x19",
14 ct white Aida, WA




1931 Floral Charm 30x30 cm,
11¾"x11¾", 14 ct white Aida, MA



1169 White Lilies 45x45 cm,
17¾"x17¾", 14 ct white Aida, WA



 **1046 Garden Roses** 40x40 cm,
15¾"x15¾", 10 ct white Aida, WA



1259 Peonies in a Vase 40x40 cm,
15¾"x15¾", 10 ct white Aida, WA



1398 Fuchsia


40x30 cm, 15¼"x11¼", 14 ct white Aida, WA, B




1561 Freesia

40x30 cm, 15¼"x11¼", 14 ct white Aida, WA, B



 **870 Basket of Strawberries** 30x24 cm,
11¼"x9½", 10 ct white Aida, WA



 **871 Wild Rose** 30x24 cm,
11¼"x9½", 10 ct white Aida, WA



1603 Wreath with Blue Spruce
30x30 cm, 11¼"x11¼",
14 ct white Aida, MA



1536 Wreath with Bird Cherry
30x30cm, 11¼"x11¼",
14 ct white Aida, MA



1456 Wreath with Fireweed
30x30 cm, 11¼"x11¼",
14 ct white Aida, MA, T



1537 Wreath with Wheat
30x30cm, 11¼"x11¼",
14 ct white Aida, MA



1065 Tulips 30x24 cm,
11¼"x9½", 14 ct flaxen Aida, WA



807 Dandelions 30x21 cm,
11¼"x8¼", 15 ct flaxen Aida, WA



1967 Hibiscus
40x50 cm, 15¾"x19¾",
10 ct white Aida, WA



1968 Dahlias
40x50 cm, 15¾"x19¾",
10 ct white Aida, WA



1938 Juicy Apples
30x40 cm, 11¾"x15¾",
14 ct white Aida, MA



1988 Sunny Persimmon
30x40 cm, 11¾"x15¾",
14 ct white Aida, MA



1550 Blackberry
19x48 cm, 7½"x19",
14 ct flaxen Aida, WA, M,
wooden hangers



1994 Charming Gladioli
20x50 cm, 7¾"x19¾",
14 ct white Aida, MA



1551 Strawberry
19x48 cm, 7½"x19",
14 ct flaxen Aida, WA, M,
wooden hangers



1824
Merci
20x20 cm, 7¾"x7¾",
14 ct white Aida, WA



1825
Bonjour
20x20 cm, 7¾"x7¾",
14 ct white Aida, WA



603
Bunch of Lilacs
20x20 cm, 7¾"x7¾",
15 ct white Aida, WA



835
Pansies
20x20 cm, 7¾"x7¾",
15 ct white Aida, WA



1669 Windowsill with Flowers
40x25 cm, 15¾"x9¾", 14 ct white Aida, WA, MA



1982 Pepper in a Pot
25x25 cm, 9¾"x9¾",
14 ct flaxen Aida, WA



1983 Tomatoes in a Pot
25x25 cm, 9¾"x9¾",
14 ct flaxen Aida, WA



1984 Strawberries in a Pot
25x25 cm, 9¾"x9¾",
14 ct flaxen Aida, WA



1762 Daffodils on the Windowsill
25x25 cm, 9¾"x9¾",
14 ct white Aida, WA, MA



1763 Crocuses on the Windowsill
25x25 cm, 9¾"x9¾",
14 ct white Aida, WA, MA



1449 Garden Strawberry 30x30 cm,
11¾"x11¾", 10 ct flaxen Aida, WA



1448 Basket with Raspberries 30x30 cm,
11¾"x11¾", 10 ct flaxen Aida, WA



1545 Stump with Fly Agaric 30x30cm,
11¾"x11¾", 10 ct flaxen Aida, WA



1450 Ripe Apples 30x30 cm,
11¾"x11¾", 10 ct flaxen Aida, WA



1488 Hot Summer 40x30 cm,
15¾"x11¾", 14 ct white Aida, WA



776 Sunflowers
40x40 cm, 15¾"x15¾",
10 ct flaxen Aida, WA



**990
Blackberries**
26x20 cm,
10¼"x7¾",
15 ct flaxen Aida,
WA



1648 Sea Buckthorn
18x24 cm, 7"x9½",
14 ct flaxen Aida, WA



1351 White Briar
21x30 cm, 8¼"x11¾",
14 ct flaxen Aida, WA



1455 Grapevine
21x30 cm, 8¼"x11¾",
14 ct colored Aida, WA



1615 Mimosa
18x24 cm, 7"x9½",
14 ct flaxen Aida, WA



583 Cosmos 30x21 cm,
11¾"x8¼", 15 ct flaxen Aida, WA



1403 Snowdrops
20x20 cm, 7¾"x7¾",
14 ct colored Aida, MA, T



582 Bouquet of Camomiles
21x30 cm, 8¼"x11¾",
15 ct flaxen Aida, WA



1020 Bunch of Pansies
24x30 cm, 9½"x11¾",
14 ct flaxen Aida, WA, T



809 May Wild Rose
21x30 cm, 8¼"x11¾",
15 ct flaxen Aida, WA



808 Wild Poppies
21x30 cm, 8¼"x11¾",
15 ct flaxen Aida, WA



1973 Autumn Flowers
30x24 cm, 11¾"x9½",
14 ct white Aida, WA



1816 Peonies and Wild Roses
30x40 cm, 11 $\frac{3}{4}$ "x15 $\frac{3}{4}$ ",
18 ct colored Aida, MA



1595 Bouquet of Chrysanthemums
30x40 cm, 11 $\frac{3}{4}$ "x15 $\frac{3}{4}$ ",
14 ct white Aida, WA



1389 Asters
30x40 cm, 11 $\frac{3}{4}$ "x15 $\frac{3}{4}$ ",
14 ct white Aida, MA



1672 Wisteria
30x40 cm, 11 $\frac{3}{4}$ "x15 $\frac{3}{4}$ ",
14 ct white Aida, WA



1612 Mallow
19x90 cm, 7½"x35½"
14 ct black Aida, WA, MA,
wooden hangers



1866 Flower Assortment
19x90 cm, 7½"x35½"
14 ct white Aida, WA, M,
wooden hangers



1629 Foxgloves
19x90 cm, 7½"x35½"
14 ct black Aida, WA, MA,
wooden hangers



1502 Yellow Rapeseed
25x25 cm, 9¾"x9¾",
14 ct flaxen Aida, WA



1478 Russian Daisies
25x25 cm, 9¾"x9¾",
14 ct flaxen Aida, WA



1404 French Lavender
25x25 cm, 9¾"x9¾",
14 ct flaxen Aida, WA



1324 Scottish Heather
25x25 cm, 9¾"x9¾",
14 ct flaxen Aida, WA



1790 Carpathians Bells
30x30 cm, 11¾"x11¾",
10 ct white Aida, WA



1765 Chamomiles
30x30 cm, 11¾"x11¾",
10 ct white Aida, WA



1556 Marigolds
20x20 cm, 7¼"x7¾",
14 ct flaxen Aida, WA



1557 Bellflower
20x20 cm, 7¼"x7¾",
14 ct flaxen Aida, WA



1497 Lilly of the Valley
20x20 cm, 7¼"x7¾",
14 ct flaxen Aida, WA



1516 Pansy Medley
20x20 cm, 7¼"x7¾",
14 ct flaxen Aida, WA



1515 Globe Flower
20x20 cm, 7¼"x7¾",
14 ct flaxen Aida, WA



1496 Forget Me Nots
20x20 cm, 7¼"x7¾",
14 ct flaxen Aida, WA



1606 Bouquet with Sweet Peas
15x18 cm, 6"x7",
14 ct white Aida, MA



1576 Bouquet with Cornflowers
15x18 cm, 6"x7",
14 ct white Aida, MA



1577 Bouquet with Coneflowers
15x18 cm, 6"x7",
14 ct white Aida, MA



241 Lily of the Valley
13x16 cm, 5"x6¼", 15 ct
white Aida, WA



1607 Bouquet with Lavender
15x18 cm, 6"x7",
14 ct white Aida, MA



240 Violets
13x16 cm, 5"x6¼",
15 ct white Aida, WA



790 Anemones
13x16 cm, 5"x6¼",
15 ct white Aida, WA



792 Violas
13x16 cm, 5"x6¼",
15 ct white Aida, WA



1842
Purple Bindweed
13x13 cm, 5"x5",
10 ct flaxen Aida, WA



1375 Queen of
Flowers 15x50 cm,
6"x19¾", 14 ct
colored Aida, WA



1857
Pair of Pansies
13x13 cm, 5"x5",
10 ct flaxen Aida, WA



1843
Red Rose
13x13 cm, 5"x5",
10 ct flaxen Aida, WA



1074 Bouquet of Love
18x23 cm, 7"x9",
14 ct flaxen Aida, MA, T, B



1841
Yellow Narcissus
13x13 cm, 5"x5",
10 ct flaxen Aida, WA



1820 Watercolor Dahlias 30x30 cm,
11¼"x11¼", 14 ct white Aida, WA



1852 Thistle 30x30 cm 11¼"x11¼",
10 ct white Aida, WA



1484 Allium 24x30 cm,
9½"x11¼", 14 ct flaxen Aida, WA



1463 Sweet William 24x30 cm,
9½"x11¼", 14 ct flaxen Aida, WA



1846 Watercolor Carnations 30x30 cm,
11¼"x11¼", 14 ct white Aida, MA



1867 Wedding Bouquet 25x25 cm,
9¾"x9¾", 14 ct white Aida, MA



1696 Hydrangea 35x30 cm,
13¾"x11¾", 14 ct white Aida, MA



1070 Watercolor Peonies 30x30 cm,
11¾"x11¾", 14 ct white Aida, MA



1467 Watercolor Jasmine 30x30 cm,
11¾"x11¾", 14 ct white Aida, MA



1069 Watercolor Phlox 30x30 cm,
11¾"x11¾", 14 ct white Aida, MA



1335 Watercolor Roses 30x30 cm,
11¾"x11¾", 14 ct white Aida, MA



1485 Watercolor Gerberas 30x30 cm,
11¾"x11¾", 14 ct white Aida, MA



1010 Summer Bouquet
48x48 cm, 19"x19",
14 ct flaxen Aida, WA



999 Summer Flowers & Poppies
45x45 cm, 17¼"x17¼",
15 ct flaxen Aida, WA



924 Wildflowers
45x45 cm, 17 $\frac{3}{4}$ "x17 $\frac{3}{4}$ ",
15 ct flaxen Aida, WA



1161 Yellow Orchid
21x30 cm, 8 $\frac{1}{4}$ "x11 $\frac{3}{4}$ ",
14 ct white Aida, MA



1163 Lilac Orchid
21x30 cm, 8 $\frac{1}{4}$ "x11 $\frac{3}{4}$ ",
14 ct white Aida, MA



1533 Lilacs after the Rain
45x45 cm, 17 $\frac{3}{4}$ "x17 $\frac{3}{4}$ ",
10 ct colored Aida, WA



1782 Tiger Lilies
25x33 cm, 9 $\frac{3}{4}$ "x13",
18 ct colored Aida, MA



1773 Bouquet with Asters
40x40 cm, 15 $\frac{3}{4}$ "x15 $\frac{3}{4}$ ",
14 ct colored Aida, WA



1775 Pink Poppies
25x33 cm, 9 $\frac{3}{4}$ "x13",
18 ct colored Aida, MA



1821 Fragrant Freesia
25x33 cm, 9¾"x13",
18 ct colored Aida, MA



1071 Irises in Vase
45x45 cm, 17¾"x17¾", 14 ct white Aida, WA



1447 Gentle Lilac
24x30 cm, 9½"x11¾",
14 ct colored Aida, MA



900 The Smell of Spring
45x45 cm, 17¾"x17¾",
15 ct white Aida, WA



1384 Dahlias
45x45 cm, 17 $\frac{3}{4}$ "x17 $\frac{3}{4}$ ",
14 ct colored Aida, WA



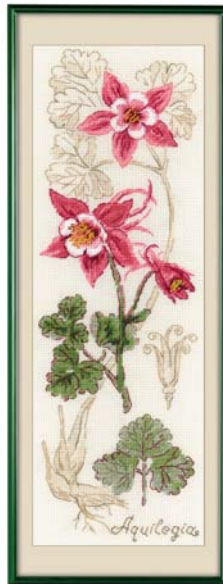
1854 Tree Peony
40x40 cm, 15 $\frac{3}{4}$ "x15 $\frac{3}{4}$ ",
10 ct white Aida, WA



1991 Lace Poppies
30x24 cm, 11¼"x9½", 14 ct black Aida, MA, B



1797 Pulmonaria
10x30 cm, 4"x11¼",
18 ct colored Aida, MA



1796 Aquilegia
10x30 cm, 4"x11¼",
18 ct colored Aida, MA



1798 Calendula
10x30 cm, 4"x11¼",
18 ct colored Aida, MA



1729 Poinsettia 19x90 cm,
7½"x35½", 14 ct white Aida,
WA, M, wooden hangers

1752 Christmas Table Topper
45x45 cm, 17¾"x17¾",
14 ct white Aida, WA



1141 The Russian Country Estate.
The Lilac Blossoms
30x40 cm, 11¾"x15¾",
14 ct white Aida, WA



1140 The Russian Country Estate.
The Tea Under the Apple Tree
30x40 cm, 11¾"x15¾",
14 ct white Aida, WA

1819
The Branch of Cydonia
16x13 cm, 6¼"x5",
14 ct white Aida, MA





**1855 Crocuses
under the Snow**
30x21 cm, 11 $\frac{3}{4}$ "x8 $\frac{1}{4}$ ",
14 ct white Aida,
M, MT

**1985
New Year's Aroma**
25x25 cm, 9 $\frac{3}{4}$ "x9 $\frac{3}{4}$ ",
14 ct white Aida, MA



**1818
The Branch of Sakura**
13x16 cm, 5"x6 $\frac{1}{4}$ ",
14 ct white Aida, MA



1801 Clematis
19x90 cm, 7 $\frac{1}{2}$ "x35 $\frac{1}{2}$ ",
14 ct white Aida, WA, M,
wooden hangers



1640 Tea and Coffee Napkins
28x28 cm, 11"x11", 14 ct flaxen Aida, WA



1744 Sakura. Fuji 55x25 cm, 21¾"x9¾", 14 ct white Aida, MA, B



1743 Sakura. Pagoda 18x24 cm, 7"x9½", 14 ct white Aida, MA, B



1745 Sakura. Bridge 18x24 cm, 7"x9½", 14 ct white Aida, MA, B



1707 Lanterns 24x8 cm 9½"x3¼"
or 3 pcs.: 8x8 cm, 3¼"x3¼", 14 ct colored Aida, MA



1806 Japanese Cranes 55x25 cm, 21¼"x9¾", 14 ct white Aida, MA



1573 Majestic Song 40x40 cm, 15¾"x15¾", 14 ct colored Aida, WA



1574 Dancing Fish 40x40 cm, 15¾"x15¾", 14 ct colored Aida, WA



814 Winter
20x20 cm, 7¾"x7¾",
15 ct colored Aida,
WA



811 Summer
20x20 cm, 7¾"x7¾",
15 ct colored Aida,
WA



813 Autumn
20x20 cm, 7¾"x7¾",
15 ct colored Aida,
WA



812 Spring
20x20 cm, 7¾"x7¾",
15 ct colored Aida,
WA



1037 Bonsai Matsu Wish of Longevity 35x45 cm, 13¾"x17¾", 14 ct white Aida, WA



1036 Bonsai Kobai Wish of Well Being 35x45 cm, 13¾"x17¾", 14 ct white Aida, WA



1834 Eastern Beauty 19x90 cm, 7½"x35½", 14 ct colored Aida, WA, MA, wooden hangers



1869 Lotus Field. Pagoda on the Water 55x25 cm, 21¼"x9¾",
14 ct white Aida, MA




1868 Lotus Field. Herons
18x24 cm, 7"x9½",
14 ct white Aida, MA



1870 Lotus Field. Fisher
18x24 cm, 7"x9½",
14 ct white Aida, MA



 **1610 Summer Abundance**
40x30 cm, 15¾"x11¾", 10 ct flaxen Aida, WA



1121 Coffee
30x24 cm, 11¾"x9½",
14 ct flaxen Aida, WA



1544 Rich Harvest 40x30 cm,
15¾"x11¾", 10 ct flaxen Aida, WA




1122 Tea
30x24 cm, 11¾"x9½",
14 ct flaxen Aida, WA



1641 Willow and Snowdrops
30x21 cm, 11¾"x8¼",
14 ct white Aida, WA



 **1085 Still Life with Sweet Cherries**
30x24 cm, 11¾"x9½",
14 ct white Aida, WA



1659 Dutch Still Life 30x30 cm,
11¾"x11¾", 14 ct black Aida, WA



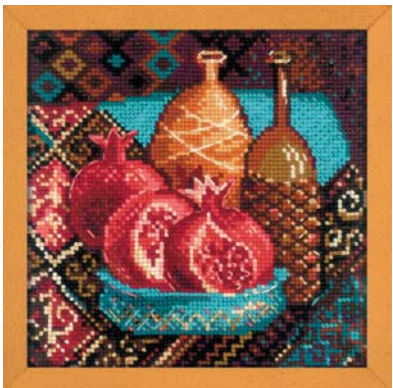
1239 Still Life with Red Wine 30x30 cm,
11¾"x11¾", 14 ct black Aida, WA, MT



1240 Still Life with Martini 30x30 cm,
11¾"x11¾", 14 ct black Aida, WA, MT



1276 Still Life with Liquor 30x30 cm,
11¾"x11¾", 14 ct black Aida, WA, MT



1858 Pomegranates 20x20 cm,
7¾"x7¾", 10 ct white Aida, WA



1859 Oranges 20x20 cm,
7¾"x7¾", 10 ct white Aida, WA



1683 Christmas City

60x21 cm, 23½"x8¼", 14 ct colored Aida, WA



1489 Tram Route

30x21 cm, 11¾"x8¼",
14 ct colored Aida, WA



1490 Cycle Lane

30x21 cm, 11¾"x8¼",
14 ct colored Aida, WA



1473 Evening Cafe

50x25 cm, 19¾"x9¾",
14 ct black Aida, MA



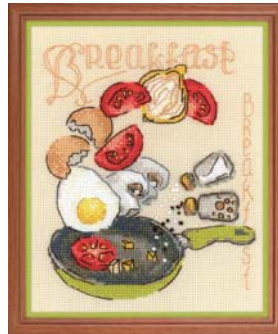
1476 Raspberry Tea
20x20 cm, 7¼"x7¼",
14 ct colored Aida, MA, MT, B



1477 Tea with Lemon
20x20 cm, 7¼"x7¼",
14 ct colored Aida, MA, MT



1686 Dinner
15x18 cm, 6"x7",
14 ct colored Aida, WA



1684 Breakfast
15x18 cm, 6"x7",
14 ct colored Aida, WA



1685 Lunch
15x18 cm, 6"x7",
14 ct colored Aida, WA



1873 Tea Time
30x21 cm, 11¼"x8¼", 14 ct flaxen Aida,
18 ct colored Aida, WA



1874 Coffee Time
30x21 cm, 11¼"x8¼", 14 ct flaxen Aida,
18 ct colored Aida, WA

CROSS-STITCH

1815

Panel/2 cushions

Home Comfort

The size of the panel is 60x30 cm,

23½"x11¾"

or the size of each cushion 30x30 cm,

11¾"x11¾",

14 ct white Aida, WA



1703 Table Runner/Pannel Sea Horse

The size of the panel is 62x32 cm,
24½"x12½", table topper size 45x16 cm,
17¾"x6¼", 18 ct colored Aida, MA



1830 Cushion/Panel Gzhel Painting

40x40 cm, 15¾"x15¾", 14 ct white Aida, WA, fabric for the back of the cushion





1600 Cushion/Panel Viennese Lace

40x40 cm, 15¾"x15¾", 14 ct colored Aida, WA, fabric for the back of the cushion



1758 Cushion/Panel Khokhloma Painting

40x40 cm, 15¾"x15¾", 14 ct black Aida, WA, fabric for the back of the cushion



1700 Cushion/Panel Spanish Lace

40x40 cm, 15¾"x15¾", 14 ct colored Aida, WA, fabric for the back of the cushion



1655 Cushion/Pannel Stained Glass Window. Dragonflies
33x33 cm, 13"x13", 10 ct Aida with pre-printed background, WA



1625 Cushion/Pannel Stained Glass Window. Butterflies
33x33 cm, 13"x13", 10 ct Aida with pre-printed background, WA



1642 Cushion/Panel Zhostovo Painting 40x40 cm, 15 $\frac{3}{4}$ "x15 $\frac{3}{4}$ ",
14 ct black Aida, WA, fabric for the back of the cushion





1958 Bright Butterflies

40x40 cm, 15¾"x15¾", 10 ct white Aida, WA



1959 Carps

40x40 cm, 15¾"x15¾", 10 ct white Aida, WA



761 Flower Arrangement
Cushion 40x40 cm, 15¾"x15¾",
10 ct black Aida, WA



1871 Cushion Mosaic 40x40 cm,
15¾"x15¾", 10 ct white Aida, WA, T,
fabric for the back of the cushion



***1590 Teddy Bear Cushion**

** The kits contain:
10 ct white Aida, WA,
zipper, fabric for the
back of the cushion.
Finished size of the
pillow 30x35 cm,
11¾"x13¾"*



***1899 Calf Cushion**



1836
Cushion
High above
the Clouds
30x30 cm,
11¾"x11¾",
10 ct white Aida,
WA



***1647 Bunny Cushion**




1413 Moorish Lawn Cushion
40x40 cm, 15¾"x15¾",
10 ct white Aida, WA



1483 Terra Cushion 40x40 cm, 15¾"x15¾",
10 ct white Aida, WA, fabric for the back of
the cushion



 **1433 Oriental Motifs Cushion**
60x40 cm, 23½"x15¾",
10 ct white Aida, WA




1999 Royal Pansies
40x40 cm, 15¾"x15¾",
10 ct white Aida, WA



1426 Dreamland Cushion
40x40 cm, 15¾"x15¾",
10 ct white Aida, WA



 **1101 White Peony Cushion** 35x35 cm,
13¾"x13¾", 14 ct white Aida, WA



1347 Pastel Bindweed Cushion
40x40 cm, 15¾"x15¾",
10 ct white Aida, WA

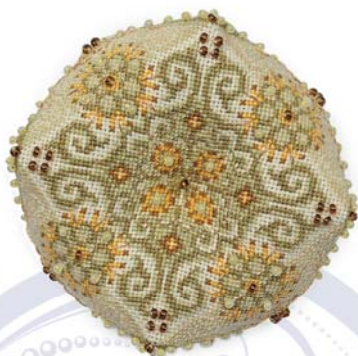


1558 Evening Garden Cushion
40x40 cm, 15¾"x15¾", 10 ct flaxen Aida, WA,
fabric for the back of the cushion

1679AC Cosmetic bag
Irises 20x13 cm, 7¾"x5",
14 ct black Aida, WA,
zipper, lining fabric



1620AC
Biscornu Poppies
8x8 cm, 3¼"x3¼",
18 ct colored Aida,
MA, B, filling



1227
Biscornu Fantasy
8x8 cm, 3¼"x3¼"
25 ct colored Lugana,
MA, MT, B, filling



1822AC
Biscornu Dawn
8x8 cm, 3¼"x3¼",
25 ct colored Lugana, MA, MT, B, filling

1504AC Brooch Porcelain

8x6 cm, 3/4"x2 1/4",
28 ct white Brittney
Lugana, MA, F, T,
filling, wooden base,
B, pin for brooch



1039 Pansy Pincushion

11x8 cm, 4 1/4"x3 1/4",
14 ct flaxen Aida, WA, filling



1695AC Berlingo

Primroses 6x5 cm, 2 1/4"x2",
18 ct colored Aida,
MA, B, filling



1708AC Pendant White Rose

7x7 cm, 2 3/4"x2 3/4", fabric with pre-printed
picture, MA, F, T, B, soutache tape,
wooden base, filling

**1505AC
Pendant
Vintage**

4,5x6,5 cm,
1 3/4"x2 1/4",
25 ct colored
Lugana,
MA, F, T, filling,
wooden base, B,
fittings



1228 Zigouigoui Delight

8x8 cm, 3 1/4"x3 1/4",
25 ct colored Lugana, MA,
MT, B, filling





1613AC
Bookmark
Graceful Lily

1614AC
Bookmark
Blooming Iris

For all two kits:
6x16 cm, 2¼"x6¼",
18 ct colored Aida, MA,
cardboard bookmark



1554AC Butterfly
6,5x5,5 cm, 2½"x2¼",
10 ct plastic canvas,
WA, B, wire,
wooden stick



1581AC Keychain
Cozy Cottage
4x5,5 cm, 1½"x2¼",
10 ct plastic canvas,
WA, key ring



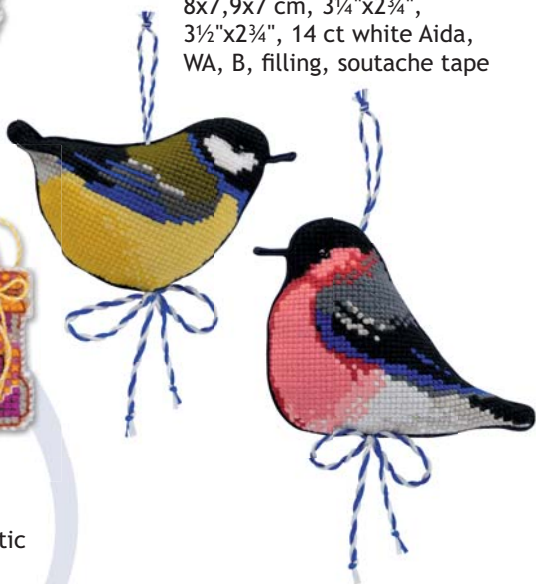
1553AC Little Birdie
6,5x5,5 cm, 2½"x2¼",
10 ct plastic canvas, WA,
wooden stick



1742 Winter Birds, 2 pcs.
8x7,9x7 cm, 3¼"x2¾",
3½"x2¾", 14 ct white Aida,
WA, B, filling, soutache tape



1749AC Jars of Jam, 3 pcs.
5,5x5 cm, 4x5,5 cm, 4,5x5,5 cm,
2¼"x2", 1½"x2¼", 1¾"x2¼", 10 ct plastic
canvas, WA



1805AC Sleep Mask Sweet Dreams

19x9 cm, 7½"x3½",
18 ct colored Aida,
MA, elastic band,
lining fabric



866 Watermelon

Pincushion 9x5x3 cm,
3½"x2"x1¼",
15 ct white Aida,
WA, filling



reverse side



1802AC

Shell Pincushion

10x15 cm, 4"x6", 18 ct colored Aida, MA, B, filling



reverse side



reverse side



reverse side

1997AC Soaring Butterflies, 3 pcs.

9x6 cm, 8x5 cm, 6x5 cm, 3½"x2¼", 3¼"x2", 2¼"x2",
10 ct plastic canvas, WA

1803

Dream Catcher

25x40 cm, 9¾"x15¾",
14 ct black Aida, WA



1783AC Card Congratulations!*

16x9 cm, 6¼"x3½",
18 ct colored Aida, MA,
T, cardboard blank

* The kit 1783AC includes chart for
three different congratulatory texts.



1989

Owl Dreams

25x40 cm, 9¾"x15¾",

14 ct white Aida, WA



1893AC Card Congratulations

on the Newborn

16x9 cm, 6¼" x 3½",

18 ct colored Aida, MA,

lace, T, cardboard blank

1860AC

Easter Bunny and Friends, 3 pcs.

5x6 cm, 5x5 cm, 5x5 cm,
2"x2¼", 2"x2", 2"x2",
10 ct plastic canvas, WA, bell



1793AC Harvest, 3 pcs.

5x5 cm, 2"x2", 10 ct plastic
canvas, WA



1813AC

Magnets Mice, 2 pcs.

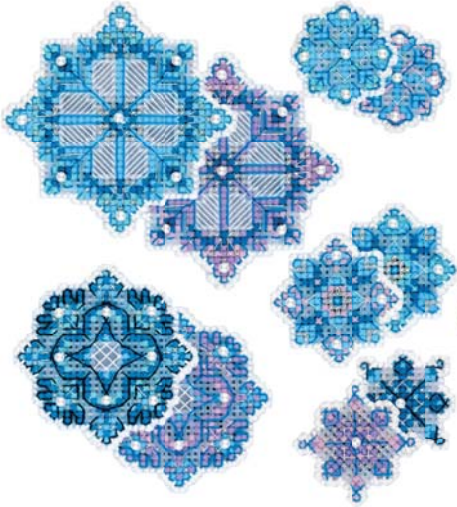
8x7 cm, 3¼"x2¾",
10 ct plastic canvas,
WA, felt, magnets



1682AC

Christmas Tree Decoration Dogs, 2 pcs.

8x8 cm, 8x9 cm, 3¼"x3¼", 3¼"x3½",
10 ct plastic canvas, WA, F



1889AC Snowflakes, 5 pcs.

9,5x9,5 cm; 7,5x7,5 cm; 5,5x5,5cm; 4,5x4,5 cm;
4,5x4,5 cm, 3¾"x3¾"; 3"x3"; 2¼"x2¼"; 1¾"x1¾";
1¾"x1¾" 10 ct plastic canvas, WA, MT, B

1885AC Magnets Three Calves, 3 pcs.

7x10 cm, 2¾"x4",
10 ct plastic canvas,
WA, F,
magnets, rings



1927AC

Easter Patterns, 3 pcs.

5,5x6 cm, 2⅛"x2¼", 10 ct plastic canvas, WA, T



1937 Winter River
40x30 cm, 15¾"x11¾",
14 ct white Aida, WA



1901 Bear, Cones and Deer
21x30 cm, 8¼"x11¾",
14 ct white Aida, WA



**1948 Easter Still Life
with Bunny**
30x40 cm, 11¾"x15¾",
14 ct white Aida, MA



1910 Gingerbread Wreath
30x30 cm, 11¾"x11¾",
14 ct white Aida, MA



1906 To the Holidays
33x25 cm, 13"x9¾",
14 ct white Aida, MA



1898 New Year's Calf
25x25 cm, 9¾"x9¾",
14 ct white Aida, MA



1903 Christmas Shelf
30x21 cm, 11¾"x8¼",
14 ct flaxen Aida, WA



1925
Blue Jays
20x20 cm, 7¾"x7¾",
14 ct white Aida, WA



1907
New Year's Letter
20x20 cm, 7¾"x7¾",
14 ct white Aida, MA



1897 Lapland
15x31 cm, 6"x12¼",
14 ct colored Aida, MA,
wooden hanger



1660 Winter Cabin
15x15 cm, 6"x6",
14 ct white Aida, WA, M, B, T



1661 Cabin with Sleigh
15x15 cm, 6"x6",
14 ct white Aida, WA, M, B, T



1663 Cabin with a Bell
15x15 cm, 6"x6",
14 ct white Aida, WA, M,
B, T, bell



1662 Ice Cabin
15x15 cm, 6"x6",
14 ct white Aida,
WA, M, B, T



2009
Easter Table Topper
27x27 cm, 10¾"x10¾",
14 ct flaxen Aida, M



1538AC
Santa Claus
6,5x8 cm, 2½"x3¼",
10 ct plastic canvas, WA



1823

Waiting for a Holiday

16x13 cm, 6¼"x5",
14 ct white Aida, WA, MT

 793 Christmas

45x45 cm, 17¾"x17¾", 15 ct white Aida, WA



1778AC Decoration Little Angels, 3 pcs.

6,5x7 cm, 7x7 cm, 6,5x7 cm, 2½"x2¾",
2¾"x2¾", 2½"x2¾", 10 ct plastic canvas,
WA, B, soutache tape



1423 Photo frame Love and Happiness
40x30 cm, 15¼"x11¼", 14 ct white Aida, WA, F



1179 Wedding Tango
20x26 cm, 7¾"x10¼",
14 ct white Aida, MA, B, T



1462 Tree of Desires
21x30 cm, 8¼"x11¼",
14 ct white Aida, WA, T



1844 Fairytale House
18x24 cm, 7"x9½",
14 ct white Aida, WA



1681AC Christmas Tree Decoration Snowmen, 3 pcs.
7,5x7 cm, 7,5x7 cm, 5,5x7 cm, 3"x2¾", 3"x2¾", 2¼"x2¾",
10 ct plastic canvas, WA, B, metal fittings



1757 Christmas Eve
21x30 cm, 8¼"x11¾",
14 ct flaxen Aida, WA, M, B



1592 Winter Window
15x21 cm, 6"x8¼",
14 ct white Aida, WA



reverse side

1980 Winter Gifts, 3 pcs.
10x18 cm, 4"x7",
15 ct colored Aida,
WA, beads, fabric



reverse side



reverse side



1957AC Magnets Tiger Cubs 3 pcs.
5x9,5 cm, 2" x 3½",
10 ct plastic canvas, WA, felt, magnets



1962 Light Breeze
15x15 cm, 6"x6",
14 ct white Aida, MA, WA



1969 Lucky Clover
15x15 cm, 6"x6",
14 ct white Aida, WA, M



1784 Scops Owl
10x10 cm, 4"x4",
10 ct white Aida, WA



1785 Parakeet
10x10 cm, 4"x4",
10 ct white Aida, WA



1795 Little Turtle
10x10 cm, 4"x4",
10 ct white Aida, WA



1839 Stick with Me
10x10 cm, 4"x4",
10 ct white Aida, WA



1838 Tea for Two
10x10 cm, 4"x4",
10 ct white Aida, WA



1840 Best Friend
10x10 cm, 4"x4",
10 ct white Aida, WA



1814 Good Luck
15x18 cm, 6"x7",
14 ct white Aida, MA



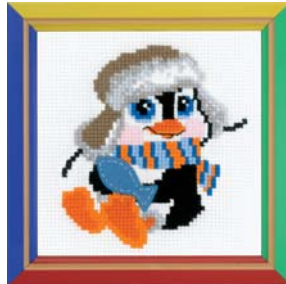
1704 For Prosperity
13x13 cm, 5"x5",
14 ct white Aida, M



1835 For Well-Being
15x18 cm, 6"x7",
14 ct white Aida, MA



1777 Little Deer
13x13 cm, 5"x5",
14 flaxen Aida, WA



HB158 Penguin
15x15 cm, 6"x6",
10 ct white Aida, WA, F



1776 Little Fox
13x13 cm, 5"x5",
14 flaxen Aida, WA



1709 Hamster and Toad
15x18 cm, 6"x7",
14 ct white Aida, M



1882 The Leaf Gatherer
15x18 cm, 6"x7",
14 ct white Aida, M



524 First Love
13x16 cm, 5"x6¼",
10 ct white Aida, WA



150 Dalmatian Dog
13x16 cm, 5"x6¼",
10 ct white Aida, WA



210 Doe
13x16 cm, 5"x6¼",
10 ct white Aida, WA



1787 Llama
15x18 cm, 6"x7",
10 ct white Aida, WA



1786 Kangaroo Family
18x15 cm, 7"x6",
10 ct white Aida, WA



HB142 Gentle Snow
13x16 cm, 5"x6¼",
10 ct white Aida, WA



1837 Jam Day
10x10 cm, 4"x4",
10 ct white Aida, WA



1741 Playing House
15x15 cm, 6"x6",
10 ct white Aida, WA



1727 Little Garden
15x15 cm, 6"x6",
10 ct white Aida, WA



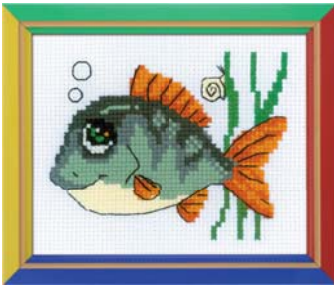
1680 Sparrow
10x10 cm, 4"x4",
14 ct flaxen Aida, WA




1883 Panda Gift
15x15 cm, 6"x6", 10 ct
white Aida, WA



1877 Little Bunny
13x13 cm, 5"x5", 14 ct
flaxen Aida, WA



 **HB139**
Smiling Fish
16x13 cm, 6¼"x5",
10 ct white Aida, WA



HB153
Two Ravens
16x13 cm, 6¼"x5",
10 ct white Aida, WA



1808 The Cat Crew.
Fisherman
9x9 cm, 3½"x3½",
14 ct white Aida, WA



HB110
Annabel
13x16 cm, 5"x6¼",
14 ct white Aida, M



1810 The Cat Crew.
Together in the Rain
9x9 cm, 3½"x3½",
14 ct white Aida, WA



1911
Teddy Bear Holiday
 15x18 cm, 6"x7",
 14 ct white Aida, WA



1986
Bunny in Flowers
 15x18 cm, 6"x7",
 14 ct white Aida, WA



1902
Calf with a Bell
 13x16 cm, 5"x6¼",
 10 ct white Aida, WA, bell



HB067 Puppy
 15x18 cm, 6"x7",
 10 ct white Aida, WA



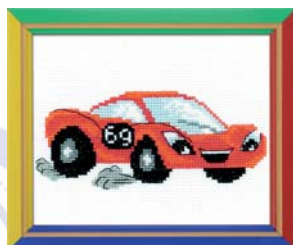
HB061 Panda
 18x15 cm, 7"x6",
 10 ct white Aida, WA



HB092 Stripies
 15x18 cm, 6"x7",
 10 ct white Aida, WA



HB119
Bunny with a Candy
 13x16 cm, 5"x6¼",
 14 ct white Aida, M



HB109 Lightning
 16x13 cm, 6¼"x5",
 14 ct white Aida, M



HB160
Sailor
 13x16 cm, 5"x6¼",
 10 ct white Aida, WA



1888 For the Success
15x18 cm, 6"x7",
14 ct white Aida, M



1976 Curious Little Tiger
20x20 cm, 7¾"x7¾",
14 ct white Aida, MA



1995 Baby Tiger
13x16 cm, 5" x 6¼",
10 ct white Aida, WA



HB172 Wild Strawberry
13x16 cm, 5"x6¼",
10 ct white Aida, WA



HB177 English Bulldog
13x13 cm, 5"x5",
14 ct white Aida, M



HB174 Apple
13x16 cm, 5"x6¼",
10 ct white Aida, WA



HB163
Treasure Island
13x16 cm, 5"x6¼",
14 ct white Aida, M



1728 Champion
13x16 cm, 5"x6¼",
14 ct white Aida, WA



HB164
Brave Pirate
13x16 cm, 5"x6¼",
14 ct white Aida, M



HB095

Ulysses Butterfly
13x13 cm, 5"x5",
14 ct white Aida, M



HB096

Swallowtail Butterfly
13x13 cm, 5"x5",
14 ct white Aida, M



HB094

Nymphalidae Butterfly
13x13 cm, 5"x5",
14 ct white Aida, M



HB016

You are my Sweetheart
16x13 cm, 6¼"x5",
10 ct white Aida, WA



HB093 Pony Crony

15x18 cm, 6"x7",
10 ct white Aida, WA



HB053

Little Imps
16x13 cm, 6¼"x5",
10 ct white Aida, WA



HB161 Monkey

15x15 cm, 6"x6",
10 ct white Aida, WA



HB103

Peace, Love, and Carrot
16x13 cm, 6¼"x5",
14 ct white Aida, M



HB156 Little Fox

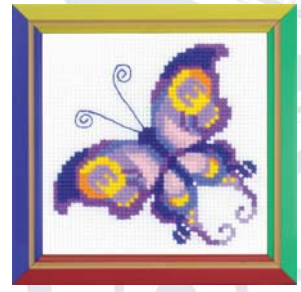
15x15, 6"x6",
10 ct white Aida, WA, F



HB159 Little Frog
15x15 cm, 6"x6",
10 ct white Aida, WA, T



HB155 Little Lamb
15x15 cm, 6"x6",
10 ct white Aida, WA, T



HB171 Amethyst Butterfly
13x13 cm, 5"x5",
10 ct white Aida, WA



HB175 Black Cat
15x15 cm, 6"x6",
10 ct white Aida, WA



HB173 Happy Halloween
15x15 cm, 6"x6",
10 ct white Aida, WA



1918 Upside Down
15x15 cm, 6"x6",
10 ct white Aida, WA



HB104 Bow
15x18 cm, 6"x7",
10 ct white Aida, WA, T



HB105 Baby Rabbit
15x18 cm, 6"x7",
10 ct white Aida, WA, T



HB068 Kitten
15x18 cm, 6"x7",
10 ct white Aida, WA

BEADS

RIOLIS created the bead embroidery kits for little needlework lovers. It just takes some patience to finish a small picture! The process is simple, and the details are described in the manual: how to fix a thread, how to level beads of a row and make them sit just right.

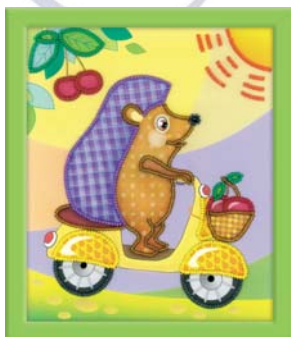
All kits marked * have the size of 10x10 cm, 4"x4" and use 14 ct white Aida canvas.



1319* Dandelion Seeds
M, B



1165* Garden Strawberry
M, B



0067 PT Hedgehog
15x18 cm, 6"x7", pre-printed
gabardine fabric, B, M



0060 PT Kitten 15x18 cm,
6"x7", pre-printed
gabardine fabric, B, M



0062 PT Sea Fish
15x18 cm, 6"x7",
pre-printed gabardine
fabric, B, M



0063 PT Good
Morning! 15x18 cm,
6"x7", pre-printed
gabardine fabric, B, M



0061 PT Fairytale
Butterfly 15x18 cm,
6"x7", pre-printed
gabardine fabric, B, M

RIOLIS Stand

The set includes wool/acrylic threads (Italy) for embroidery 65x100 cm, 160 colors and 10 skeins of one color on the hook, each skein in 20 m + thread catalog
Gross Weight: ~ 12 kg



RIOLIS thread catalog 170 colors
Thread: wool/acrylic (Italy)



RIOLIS embroidery thread
wool/acrylic (Italy)
10 skeins (20 m each) of one color
in the PE package



art.	pp.	art.	pp.	art.	pp.	art.	pp.
DIAMOND		AM0057	23	100/062.....	29	0086 PT	43
MOSAIC		AM0058	20	100/063.....	28	0087 PT	43
AM0004	26	AM0059	20			0088 PT	49
AM0005	22	AM0060	17	KITS WITH			
AM0006	21	AM0061	17	PRE-PRINTED			
AM0007	21	AM0062	25	FABRIC			
AM0008	21	AM0063	25	0012 PT	45	0090 PT	50
AM0009	24	AM0064	26	0018 PT	44	0091 PT	13
AM0010	22	AM0065	16	0019 PT	44	0092 PT	13
AM0011	22	AM0066	25	0024 PT	50	0094 PT	4
AM0012	17	AM0067	16	0025 PT	44	0095 PT	11
AM0013	24	AM0068	16	0028 PT	45	0096 PT	13
AM0014	22	AM0069	14	0031 PT	52	0097 PT	13
AM0015	24	AM0070	15	0033 PT	44		
AM0016	24	AM0071	14	0034 PT	47	NEEDLEWORK	
AM0017	26	AM0072	15	0035 PT	48	KITS	
AM0018	26	AM0073	14	0038 PT	45	150	182
AM0019	26	AM0074	26	0041 PT	52	210	182
AM0020	27	AM0076	19	0042 PT	52	240	140
AM0021	26	AM0077	25	0043 PT	50	241	140
AM0022	27			0044 PT	47	373	63
AM0023	17	RIOLIS		0045 PT	47	479	60
AM0024	21	PREMIUM		0046 PT	49	524	182
AM0025	18	100/010.....	41	0050 PT	48	582	135
AM0026	17	100/021.....	40	0051 PT	46	583	135
AM0027	26	100/023.....	30	0052 PT	46	603	131
AM0028	27	100/027.....	37	0053 PT	46	610	93
AM0029	27	100/028.....	37	0054 PT	48	611	93
AM0030	27	100/029.....	38	0055 PT	48	612	93
AM0031	27	100/033.....	36	0056 PT	48	613	93
AM0032	27	100/034.....	31	0057 PT	47	761	163
AM0033	25	100/036.....	36	0058 PT	43	764	100
AM0034	25	100/037.....	32	0059 PT	43	766	100
AM0035	27	100/038.....	41	0060 PT	188	767	115
AM0036	18	100/039.....	29	0061 PT	188	776	134
AM0037	27	100/041.....	39	0062 PT	188	790	140
AM0038	17	100/042.....	35	0063 PT	188	792	140
AM0039	15	100/043.....	40	0065 PT	43	793	177
AM0040	18	100/045.....	37	0066 PT	43	807	129
AM0041	19	100/046.....	39	0067 PT	188	808	135
AM0042	19	100/047.....	38	0068 PT	48	809	135
AM0043	19	100/049.....	35	0069 PT	48	811	153
AM0044	16	100/050.....	30	0070 PT	52	812	153
AM0045	18	100/051.....	31	0071 PT	52	813	153
AM0046	15	100/052.....	33	0075 PT	42	814	153
AM0047	14	100/053.....	36	0076 PT	42	826	104
AM0048	22	100/054.....	33	0077 PT	45	827	104
AM0049	22	100/055.....	31	0078 PT	50	835	131
AM0050	18	100/056.....	32	0079 PT	49	841	123
AM0051	23	100/057.....	34	0080 PT	49	842	123
AM0052	23	100/058.....	30	0081 PT	42	857	92
AM0053	20	100/059.....	30	0082 PT	42	858	92
AM0054	20	100/060.....	34	0083 PT	46	859	92
AM0055	23	100/061.....	28	0084 PT	42	860	92
AM0056	23			0085 PT	42	864	126

art.	pp.	art.	pp.	art.	pp.	art.	pp.
866	169	1151	99	1399	108	1504AC	167
870	128	1155	71	1400	75	1505AC	167
871	128	1159	109	1402	56	1506	67
898	126	1161	145	1403	135	1510	103
900	147	1163	145	1404	138	1515	139
906	96	1165	188	1405	76	1516	139
916	54	1169	127	1413	164	1520	61
924	145	1170	54	1416	111	1525	101
928	116	1173	79	1417	83	1528	57
929	117	1176	97	1418	83	1529	73
937	107	1177	75	1423	178	1533	146
939	123	1179	178	1426	165	1536	129
941	122	1189	58	1427	71	1537	129
945	99	1194	69	1433	165	1538AC	176
978	64	1226	54	1434	74	1543	68
989	71	1227	166	1437	108	1544	156
990	134	1228	167	1438	109	1545	133
995	82	1238	102	1446	126	1546	98
999	144	1239	157	1447	147	1547	98
1003	69	1240	157	1448	133	1548	73
1010	144	1241	116	1449	133	1549	106
1020	135	1247	97	1450	133	1550	131
1036	154	1248	97	1451	104	1551	131
1037	154	1258	109	1454	73	1552	56
1039	167	1259	127	1455	134	1553AC	168
1046	127	1260	73	1456	129	1554AC	168
1056	122	1261	107	1458	86	1556	139
1057	122	1276	157	1462	178	1557	139
1065	129	1277	74	1463	142	1558	165
1066	95	1305	116	1467	143	1561	128
1067	99	1306	63	1469	111	1562	77
1068	98	1319	188	1470	78	1563	77
1069	143	1322	111	1471	68	1569	67
1070	143	1323	111	1472	70	1570	53
1071	147	1324	138	1473	158	1571	53
1074	141	1327	96	1476	159	1572	53
1077	105	1328	96	1477	159	1573	153
1078	64	1333	78	1478	138	1574	153
1079	64	1335	143	1479	110	1576	140
1080	64	1347	165	1480	114	1577	140
1085	156	1351	134	1483	164	1578	98
1088	55	1360	82	1484	142	1579	60
1098	64	1361	106	1485	143	1581AC	168
1101	165	1362	116	1486	79	1585	99
1120	96	1364	117	1487	68	1586	51
1121	156	1370	105	1488	134	1587	51
1122	156	1375	141	1489	158	1588	51
1123	83	1384	148	1490	158	1590	164
1124	83	1385	73	1491	111	1591	54
1134	60	1388	116	1494	104	1592	179
1140	150	1389	136	1495	92	1595	136
1141	150	1390	95	1496	139	1599	100
1142	109	1391	95	1497	139	1600	161
1143	109	1393	94	1501	110	1603	129
1144	109	1398	128	1502	138	1604	67

ALPHABETICAL INDEX

art.	pp.	art.	pp.	art.	pp.	art.	pp.
1605	67	1672	136	1729	150	1789	120
1606	140	1673	106	1730	87	1790	138
1607	140	1674	73	1731	87	1791	118
1610	156	1676	63	1732	87	1792	118
1611	74	1677	63	1733	87	1793AC	172
1612	137	1678	62	1734	66	1794	125
1613AC	168	1679AC	166	1735	77	1795	180
1614AC	168	1680	183	1736	77	1796	149
1615	134	1681AC	178	1737	90	1797	149
1617	82	1682AC	172	1738	53	1798	149
1618	125	1683	158	1740	119	1799	79
1620AC	166	1684	159	1741	182	1800	79
1625	162	1685	159	1742	168	1801	151
1626	105	1686	159	1743	152	1802AC	169
1627	103	1687	51	1744	152	1803	170
1629	137	1688	51	1745	152	1804	108
1630	53	1689	70	1747	71	1805AC	169
1632	53	1690	70	1749AC	168	1806	153
1633	53	1691	70	1751	80	1807	110
1635	99	1692	66	1752	150	1808	183
1636	111	1693	66	1753	113	1810	183
1637	82	1694	78	1754	113	1811	95
1638	75	1695AC	167	1755	113	1812	59
1639	102	1696	143	1756	113	1813AC	172
1640	151	1697	103	1757	179	1814	181
1641	156	1698	57	1758	161	1815	160
1642	162	1699	57	1759	66	1816	136
1643	57	1700	161	1760	66	1817	120
1644	70	1701	55	1761	103	1818	151
1645	61	1702	55	1762	133	1819	150
1646	78	1703	160	1763	133	1820	142
1647	164	1704	181	1764	120	1821	147
1648	134	1705	62	1765	138	1822AC	166
1649	98	1706	61	1766	119	1823	177
1650	53	1707	152	1767	103	1824	131
1651	53	1708AC	167	1768	59	1825	131
1652	53	1709	181	1770	81	1826	105
1653	53	1710	97	1771	57	1827	126
1655	162	1711	112	1772	57	1830	160
1656	80	1712	125	1773	146	1831	87
1657	80	1713	83	1774	56	1832	87
1658	80	1714	53	1775	146	1833	79
1659	157	1715	53	1776	181	1834	154
1660	176	1716	53	1777	181	1835	181
1661	176	1717	125	1778AC	177	1836	164
1662	176	1718	92	1779	56	1837	182
1663	176	1719	92	1780	117	1838	180
1664	93	1720	78	1781	78	1839	180
1665	93	1722	125	1782	146	1840	180
1666	93	1723	76	1783AC	170	1841	141
1667	93	1724	95	1784	180	1842	141
1668	93	1725	95	1785	180	1843	141
1669	132	1726	117	1786	182	1844	178
1670	67	1727	182	1787	182	1845	64
1671	94	1728	185	1788	88		

art.	pp.	art.	pp.	art.	pp.	art.	pp.
1846	142	1902	184	1959	163	2018	7
1847	80	1903	175	1960	62	2019	12
1848	101	1904	89	1962	180	2020	11
1850	55	1905	115	1963	90	2021	11
1851	115	1906	175	1964	90	2023	9
1852	142	1907	175	1965	90	2024	7
1853	82	1908	72	1966	90	2025	12
1854	148	1909	89	1967	130	2026	6
1855	151	1910	174	1968	130	2027	12
1856	114	1911	184	1969	180	2028	12
1857	141	1912	101	1972	126	2029	10
1858	157	1913	124	1973	135	2030	6
1859	157	1914	119	1974	125	2031	7
1860AC	172	1915	121	1975	112	2032	5
1861	86	1916	121	1976	185	2033	8
1862	81	1917	85	1977	84	2034	4
1863	71	1918	187	1978	62	2035	11
1864	103	1919	91	1979	94	HB016	186
1865	112	1920	91	1980	179	HB053	186
1866	137	1921	102	1981	59	HB061	184
1867	142	1922	124	1982	132	HB067	184
1868	155	1923	85	1983	132	HB068	187
1869	155	1924	120	1984	132	HB092	184
1870	155	1925	175	1985	151	HB093	186
1871	163	1926	77	1986	184	HB094	186
1872	88	1927AC	173	1987	86	HB095	186
1873	159	1928	100	1988	130	HB096	186
1874	159	1929	76	1989	171	HB103	186
1875	88	1930	76	1990	65	HB104	187
1876	88	1931	127	1991	149	HB105	187
1877	183	1932	76	1992	65	HB109	184
1878	101	1933	118	1993	65	HB110	183
1879	113	1934	77	1994	131	HB119	184
1880	81	1935	77	1995	185	HB139	183
1881	69	1936	112	1996	8	HB142	182
1882	181	1937	174	1997AC	169	HB153	183
1883	183	1938	130	1998	10	HB155	187
1884	55	1939	91	1999	165	HB156	186
1885AC	173	1940	84	2000	6	HB158	181
1886	108	1941	84	2001	8	HB159	187
1887	121	1942	89	2002	8	HB160	184
1888	185	1943	91	2003	7	HB161	186
1889AC	173	1944	84	2004	9	HB163	185
1890	114	1945	121	2005	13	HB164	185
1891	114	1946	121	2006	7	HB171	187
1892	113	1947	124	2007	13	HB172	185
1893AC	171	1948	174	2008	10	HB173	187
1894	89	1951	85	2009	176	HB174	185
1895	89	1952	65	2010	12	HB175	187
1896	89	1953	65	2011	12	HB177	185
1897	175	1954	117	2012	5		
1898	175	1955	58	2013	10		
1899	164	1956	76	2014	10		
1900	72	1957AC	179	2015	10		
1901	174	1958	163	2017	9		



facebook.com/RIOLIScraft



youtube.com/c/riolis_needlework



instagram.com/riolis_needlework/



twitter.com/RiolisN



RIOLIS

www.riolis.com
salesteam@riolis.com

NOT FOR SALE